

MultiRAE PLUS

MULTI-GAS MONITOR PGM-50

OPERATION AND MAINTENANCE MANUAL

(Document No.: 008-4001)

Rev. G-1



RAE SYSTEMS INC.
1339 Moffett Park Drive
Sunnyvale, CA 94089

February 2002



Table of Contents

1. GENERAL INFORMATION	1-1
1.1 General Specifications	1-2
2. OPERATION OF MULTIRAE PLUS.....	2-1
2.1 Physical Description.....	2-2
2.2 Keys and Display.....	2-4
2.3 Power On/Off	2-7
2.4 Operations	2-10
2.5 Alarm Signals.....	2-17
2.6 Back Light.....	2-20
2.7 Preset Alarm Limits and Calibration.....	2-21
2.8 Integrated Sampling Pump	2-22
2.9 Datalogging	2-24
3. OPERATION OF ACCESSORIES.....	3-1
3.1 Battery Charging Operation	3-2
3.2 Alkaline Battery Adapter.....	3-4
3.3 Water Trap Filter	3-5
3.4 Remote Sampling Probe or Tygon Tubing.....	3-6
3.5 Dilution Fitting.....	3-7
3.6 Calibration Adapter	3-8
4. PROGRAMMING OF MULTIRAE PLUS.....	4-1
4.1 Programming Mode.....	4-2
4.2 Keys for Programming Mode.....	4-4
4.3 Entering into Programming Menu.....	4-5
4.4 Calibration of MultiRAE PLUS Monitor.....	4-7
4.4.1 Fresh Air Calibration	4-10
4.4.2 Multiple Sensor Calibration	4-11
4.4.3 Single Sensor Calibration	4-14
4.4.4 Modify Span Gas Value.....	4-17
4.4.5 Change LEL/VOC Span Gas	4-18
4.5 Change Alarm Limits	4-20

4.6	View or Change Datalog	4-22
4.6.1	Reset Peak and Minimum.....	4-23
4.6.2	Clear All Data.....	4-24
4.6.3	Change Datalog Period.....	4-25
4.6.4	Select Data Type.....	4-26
4.6.5	View Datalog.....	4-27
4.6.6	Enable / Disable Datalog	4-28
4.7	Change Monitor Setup	4-29
4.7.1	Change Site ID.....	4-30
4.7.2	Change Alarm Mode	4-31
4.7.3	Change User Mode	4-32
4.7.4	Change Real Time Clock.....	4-33
4.7.5	Change Back Light Mode.....	4-34
4.7.6	Change Password.....	4-35
4.7.7	Change Pump Speed.....	4-36
4.7.8	Change Averaging Method.....	4-37
4.8	Change Sensor Configuration	4-38
4.8.1	Change LEL/VOC Gas Selection	4-40
4.8.2	Enable / Disable Sensor.....	4-44
4.8.3	Change Dilution Ratio.....	4-45
4.8.4	Change PID Lamp Type	4-46
4.9	Exit Programming Mode.....	4-47
5.	COMPUTER INTERFACE	
	FOR MULTIRAE PLUS.....	5-1
5.1	Install ProRAE-Suite Software	5-2
5.2	Connect MultiRAE PLUS to PC.....	5-4
5.3	Start ProRAE-Suite Software.....	5-5
5.4	Setup Communication Port	5-7
5.5	Processing the Configuration Data.....	5-8
5.5.1	Editing the Configuration Data.....	5-9
5.5.2	Send Configuration to MultiRAE Plus.....	5-21
5.5.3	Saving Configuration Data	5-22
5.5.4	Configuring All Settings.....	5-23
5.6	Processing the Logged Data.....	5-24

5.6.1	Receive Data from MultiRAE PLUS	5-25
5.6.2	View Logged Data in Text Mode	5-26
5.6.3	View STEL/TWA/AVG Value	5-28
5.6.4	View Summary Information	5-29
5.6.5	View Logged Data in Graph Mode.....	5-30
5.6.6	Export the Displayed Data to a Text File	5-34
5.6.7	Export Graphic to a File	5-35
5.6.8	Print the Logged Data.....	5-36
5.7	Upgrade the Datalog Option	5-37
5.8	Upgrade the Firmware.....	5-39
6.	THEORY OF OPERATION.....	6-1
7.	MAINTENANCE	7-1
7.1	Battery Replacement	7-2
7.2	Sensor Replacement	7-4
7.3	PID Sensor Cleaning / Replacement	7-7
7.4	PID Lamp Care.....	7-9
7.5	Sampling Pump Replacement	7-11
8.	TROUBLESHOOTING	8-1
8.1	Special Diagnostic Mode	8-2
8.2	Troubleshooting Table	8-10
	APPENDIX A. QUICK REFERENCE GUIDE	A-1
	APPENDIX B. CORRECTION FACTORS	B-1
	APPENDIX C. MULTIRAE PLUS DATA	
	CONVERSION TO MICROSOFT EXCEL®	C-1
	APPENDIX D. RAE SYSTEMS TECHNICAL	
	NOTES	D-1
	APPENDIX E. RAE SYSTEMS APPLICATION	
	NOTES	E-1
	APPENDIX F. LITERATURE REQUEST.....	F-1
	APPENDIX G. REQUEST FOR RETURN	
	AUTHORIZATION FORM.....	G-1
	Main Contact Numbers.....	Outer Back Cover

 **! WARNING !** 

- DO NOT proceed before reading -

This manual must be carefully read by all individuals who have or will have the responsibility for using, maintaining, or servicing this product.

The product will perform as designed only if it is used, maintained, and serviced in accordance with the manufacturer's instructions.

CAUTION!!

To reduce the risk of electric shock, turn off power before removing the monitor cover. Disconnect the battery before removing sensor module for service. Never operate the monitor while the cover is removed. Remove monitor cover and sensor module only in an area known to be non-hazardous.

The model PGM-50 equipment is classified as to intrinsic safety for use in class I, division 1, groups A, B, C, D, or non-hazardous locations only.

Special Note

-1-

When the PGM-50 Multi-gas Monitor is taken out from the transport case and turned on for the first time, there may be some residual organic or inorganic vapor trapped inside the detector chamber. The initial PID or toxic sensor reading may indicate a few ppm. Ensure an area free of organic or toxic vapor and turn on the monitor. After running for several minutes, the residual vapor in the detector chamber will be cleared and the reading should return to zero.

-2-

The battery of the MultiRAE PLUS monitor will discharge slowly even if it is turned off. If the monitor has not been charged for 5-7 days, the battery voltage will be low. Therefore, it is a good practice to always charge the monitor before using it. It is also recommended to fully charge the monitor for AT LEAST 10 HOURS before initial use (see Section 7 for more information on battery charging and replacement).

WARNINGS:

Use only RAE Systems battery packs, part Nos. 500-0028, 500-0029, or 500-0039. This instrument has not been tested in an explosive gas/air atmosphere having an oxygen concentration greater than 21%. Substitution of components may impair intrinsic safety. Recharge batteries only in non-hazardous locations.

AVERTISSEMENT:

Utiliser seulement l'ensemble de batterie RAE Systems, la référence 500-0028, 500-0029 au 500-0039. Cet instrument n'a pas été essayé dans une atmosphère de gaz/air explosive ayant une concentration d'oxygène plus élevée que 21%. La substitution de composants peut compromettre la sécurité intrinsèque. Ne charger les batteries que dans emplacements désignés non dangereuse.

STATIC HAZARD:

Clean only with a damp cloth.

DANGER RISQUE D'ORIGINE

ELECTROSTATIQUE:

Nettoyer uniquement avec un chiffon humide.

CAUTION:

For safety reasons this equipment must be operated and serviced by qualified personnel only. Read and understand instruction manual completely before operating or servicing.

ATTENTION:

Pour des raisons de sécurité, cet équipement doit être utilisé, entretenu et réparé uniquement par un personnel qualifié. Étudier le manuel d'instructions en entier avant d'utiliser, d'entretenir ou de réparer l'équipement.

CAUTION:

Before each day's usage, sensitivity must be tested on a known concentration of methane gas equivalent to 20-50% of full scale concentration. Accuracy must be within 0 to +20% of actual. Accuracy may be corrected by calibration.

ATTENTION:

Avant chaque utilisation journalière vérifier la sensibilité avec une concentration connue de méthane équivalente à 20 - 50% de la pleine échelle. La précision doit être comprise entre 0 - 20% de la valeur vraie et peut être corrigée par une procédure d'étalonnage.

CAUTION:

Any rapid up-scale reading followed by a declining or erratic reading may indicate a gas concentration beyond upper scale limit which may be hazardous.

ATTENTION:

Toute lecture rapide et positive, suivie d'une baisse subite au erratique de la valeur, peut indiquer une concentration de gaz hors gamme de détection qui peut être dangereux.

WARNING:

The calibration of all newly purchased RAE Systems instruments should be tested by exposing the sensor(s) to known concentration calibration gas before the instrument is used or put into service.

For maximum safety, the accuracy of the MultiRAE PLUS should be checked by exposing the sensor(s) to known concentration calibration gas before each day's use.

AVERTISSEMENT:

La calibration de toute instruments de RAE Systems doivent être testé en exposant l'instrument a une concentration de gaz connue par une procédure diétalonnage avant de mettre en service l'instrument pour la première fois.

Pour une securite maximale, la sensibilité du MultiRAE PLUS doit être verifier en exposant l'instrument a une concentration de gaz connue par une procédure diétalonnage avant chaque utilisation journalière.

1. GENERAL INFORMATION

MultiRAE PLUS is a programmable Multi-gas monitor designed to provide continuous exposure monitoring of toxic gases, oxygen and combustible gases for workers in hazardous environments. It monitors three classes of hazardous gases:

- (1) Organic vapors in the ppm range with the supplied Photo-Ionization Detector (PID) using a 9.8, 10.6 eV or 11.7 eV gas discharge lamp,
- (2) Combustible gases near their lower explosive limits (LEL) with a catalytic bead sensor, and
- (3) Inorganic compounds, including oxygen deficiency, with the electrochemical sensors.

Other features include:

- **Lightweight and Compact**
 - 16 oz (454 g), Walkman[®] size.
- **Dependable and Accurate**
 - 10 hours monitoring with micro controller.
- **User Friendly**
 - menu driven, intuitive end-use operation.
- **Programmable Alarm Thresholds**
 - audio buzzer & flashing display alarm.

MultiRAE PLUS (PGM-50) consists of: A Multi-gas Monitor, a battery charger, rubber boot, alkaline battery adapter, water and dust filters, plus calibration accessories.

1.1 General Specifications

Table 1.1

Multi-Gas Monitor Specification	
Dimensions:	4.65”L x 3.0”W x 1.9”H (11.8 cm x 7.6 cm x 4.8 cm)
Weight:	16 oz (454 g) with battery.
Detector:	Up to five sensors (oxygen, combustible, two toxic and VOC). Electrochemical sensors for toxic gases and oxygen, photo-ionization detector for ppm level VOCs, and catalytic sensor for LEL level combustible gases.
Battery:	Rechargeable, 4.8V/1100 mAh Li ion or 4.8V/1700 mAh Ni-Cd battery pack with built-in charger (10 hours charge time) or a 4 AA alkaline battery adapter.
Operating Time:	Up to 10 hours continuous operation.
Display:	2 line, 16 digit LCD with LED back light automatically in dim light.
Key-pads:	1 operation key and 2 programming keys.
Direct Readout:	Instantaneous values (up to 5), sensor name, high and low values for all detectors, TWA and STEL values for toxic and VOCs, battery voltage and elapsed time. (Continued)

Multi-Gas Monitor Specification

(Continued)

Alarm Settings: Separate alarm limit settings for TWA, STEL, Low and High alarm.

Range, Resolution and Response Time (t_{90} diffusion):

CO	0-500 ppm	1 ppm	20 sec
H ₂ S	0-100 ppm	1 ppm	30 sec
SO ₂	0-20 ppm	0.1 ppm	15 sec
NO	0-250 ppm	1 ppm	20 sec
NO ₂	0-20 ppm	0.1 ppm	25 sec
Cl ₂	0-10 ppm	0.1 ppm	60 sec
O ₂	0-30 %	0.1 %	15 sec
VOC	0-200 ppm	0.1 ppm	10 sec
VOC	200-2000 ppm	1 ppm	10 sec
LEL	0-100 %	1 %	15 sec
HCN	0-100 ppm	1 ppm	60 sec
NH ₃	0-50 ppm	1 ppm	150 sec
PH ₃	0-5 ppm	0.1 ppm	60 sec

Alarm: 90 dB buzzer and flashing red LED to indicate exceeded preset limits, low battery, or sensor failure.

Calibration: Two point field calibration for fresh air and standard reference gases.

Attachment: Rubber boot, wrist strap, belt clip.

Sampling Pump: Internal integrated with 300 cc/min flow rate (high setting).

Protection: Password protected calibration settings, alarm limits, and data.

Multi-Gas Monitor Specification

(continued)

Intrinsic Safety: UL & cUL Class 1, Division I, Group A,B,C,D (US & Canada), EEx ia IIC T4 (Europe).

EM Immunity: No effect when exposed to 0.43 mW /cm² RF interference (5 watt transmitter at 12 inches).

Data Storage: 20,000 readings (64 hours, 5 channels at 1 minute interval) in non-volatile memory.

Datalog Interval: Programmable 1- 3600 sec.

External Alarm: Optional plug in pen size vibration alarm or earphone.

Communication: Upload data to PC and Download monitor setup from PC through RS-232 link to serial port on PC.

Temperature: -20^o to 45^oC (-4^o to 113^o F).

Humidity: 0 % to 95% relative humidity.
(non-condensing)

Configuration: 2, 3, 4 and 5 gas with / without pump and with / without datalogging.

2. OPERATION OF MULTIRAE PLUS

The MultiRAE PLUS Monitor gives real time measurements and activates alarm signals whenever the exposure exceeds preset limits on any of the five possible sensors. Prior to factory shipment, the MultiRAE PLUS is pre-set with default alarm limits and the sensors are pre-calibrated with standard calibration gas. However, the user should calibrate the instrument before the first use. After the monitor is fully charged and calibrated, it is ready for immediate operation.

2.1 Physical Description

Figure 2-1 shows the main components of the MultiRAE PLUS Multi-gas Monitor which include:

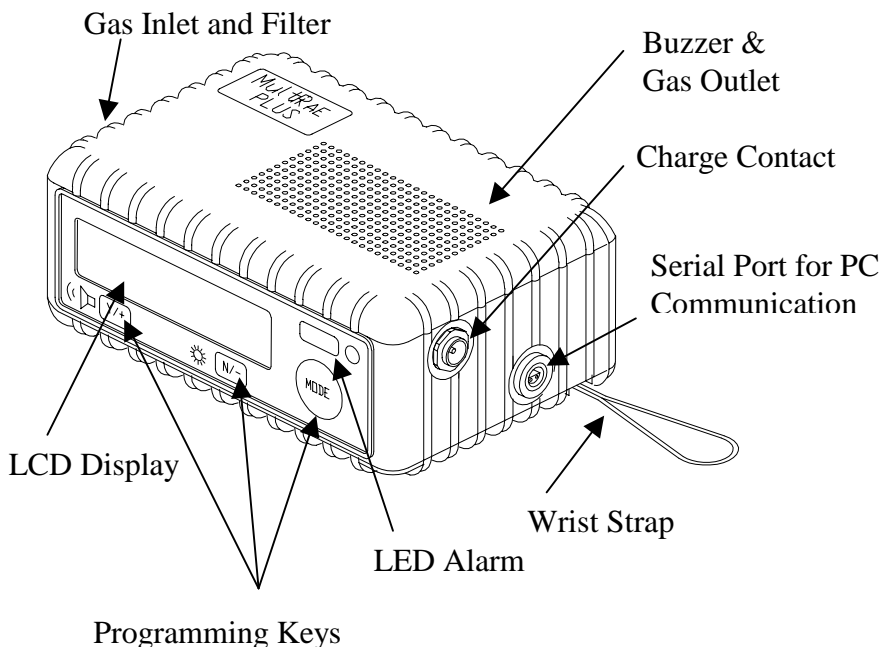


Figure 2-1 Major parts of the MultiRAE PLUS Multi-gas Monitor

- 3 keys for the user to interact with the monitor: 1 operation key and 2 programming keys for normal operation or programming of the monitor.
- LCD display with back light to show real time and calculated measurements.

- Buzzer and red LED for alarm signal whenever the exposures exceed preset limits and for error conditions.
- Wrist strap.
- Charge contact for plugging directly to the charging station.
- Gas entry port.
- Serial communication port for PC interface.

2.2 Keys and Display

Figure 2-2 shows the LCD display and the keypad on the front panel of the monitor. The functions of the 3 keys during normal operation are summarized in Table 2.1 on the next page:

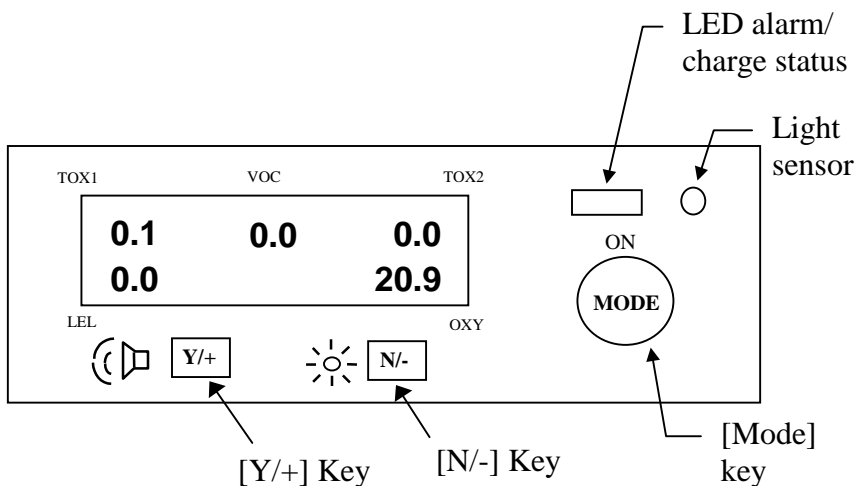


Figure 2-2 Key-pad and Display of the MultiRAE PLUS Multi-gas Monitor

Table 2.1

Key	Function in Normal Operation
[MODE]:	Turn on/off the power* and choose different display mode.
[N/-]:	Toggle on/off the back light. Answer as “No.”
[Y/+]:	Alarm test and alarm acknowledgment (turn off latched alarm, turn on pump or LEL sensor). Answer as “Yes.”

* Pressing and holding **[MODE]** key for 5 seconds turns off the power to the monitor. Monitor will beep once per second during power-down sequence. Press **[MODE]** key momentarily to choose different display modes (see Section 2.4 for details).

The Multi-gas Monitor includes a 2-line, 16-digit dot matrix LCD display. The LCD shows the following eight types of displays during normal operation if the [MODE] key is pressed:

- Real time instantaneous gas concentration in ppm for toxic and VOC gases, % by volume for oxygen and % LEL for combustible gases.
- Sensor names.
- Peak and minimum gas concentration for toxic, VOC, oxygen and combustible gases.
- 15 minute Short Term Exposure Level (STEL) values of the toxic and VOC gases in ppm and 8 hours Time Weighted Average (TWA).
- Battery voltage and shut off voltage in volts.
- Real time clock, run time and temperature.
- Datalogging mode or “Start / Stop Datalog?” menu to enable/disable datalogging if manual datalogging mode is selected.
- LEL or VOC gas names (if the LEL and VOC sensor are installed).
- “Print Reading?” menu to print the reading to the RAE Printer.
- “Communicate with PC?” menu to send or receive data between PC and the MultiRAE PLUS monitor.

2.3 Power On/Off

To turn on the MultiRAE PLUS Multi-gas Monitor, press **[MODE]** key. The audio buzzer will beep once and the display will show “ON!..” and then “MultiGas Monitor Ver n.nn” to indicate the software version number. The custom power-on-name which can be changed by the customer using the ProRAE Suite Software. The model number, serial number, current date and time, temperature of the monitor are displayed next. The monitor will then go through each sensor socket to check if a valid sensor is installed. If a new sensor is installed, a message to remind the user to calibrate the sensor will be displayed followed by a message that the alarm limits have been reset to default values for the new sensor. If a sensor reaches its expected end of life, a “Warranty Expired” message will be displayed.

Next, the monitor displays the preset alarm limits for each sensor, battery voltage, shut off voltage, user mode, alarm mode, datalog mode, available data storage memory (in hours), datalog mode and datalog interval (in seconds) and then after 10 seconds, the display shows the instantaneous reading of the gas concentration in ppm and is ready to monitor gases.

To turn off the MultiRAE PLUS Multi-gas Monitor, press and hold the **[MODE]** key for 5 seconds. Monitor will beep once per second during power-down sequence with a count down timer showing the number of remaining seconds. The message “Off!..” flashes on the LCD display and the

display will go blank, indicating that the monitor is turned off.

Turning off the Multi-gas monitor with the AC charger in place will result in a display of “Charging..” or “Battery Charged” and indication of battery voltage. This indicates that the monitor is off, but the smart charger circuit is now active.

To turn the unit on from the charge or discharge mode, press the [MODE] key.

Data protection during power off

When the monitor is turned off, all the current real time data including TWA, STEL, Peak and elapsed time are erased. However, the datalog data is preserved in non-volatile memory. Even if the battery is disconnected, the datalog data will not be lost. During the power off period, the real time clock will continue to operate until the battery is completely drained (usually in 5-7 days without any charging). If the battery is completely drained or is disconnected from the monitor for more than 30 minutes, the real time clock will be lost. In this case, users need to enter the real time clock information again, as described in Section 4.

Datalog versus Non Datalog monitor

There are two versions of the PGM-50 Multi-gas Monitors: Datalog monitors and Non-Datalog monitors. During power on sequence, a letter “D” following the version number indicates that the monitor is configured as a Datalog monitor. Without the letter “D”, it is a Non-Datalog monitor.

Users can upgrade a Non-Datalog monitor to a Datalog monitor. Call the factory for information on how to order the upgrade kit and follow the instructions described in Section 5.7 to enable or disable the datalog feature for the monitor.

2.4 Operation

The MultiRAE PLUS Multi-gas Monitor offers three different user modes of operation:

Text mode,
Display mode, and
Programming mode (default mode setting).

The **text** mode is the simplest mode of operation. The monitor will display the sensor name after the monitor is turned on. The user can press the **[MODE]** key to see the instantaneous gas concentration reading, battery voltage or enter the PC communication menu. The user can get into the calibration mode from text mode to do calibrations, but cannot change most of the parameters.

In the **display** mode, the MultiRAE PLUS Multi-gas Monitor is able to display all the information in the text mode. In addition, the following information is also available by pressing the **[MODE]** key: peak, minimum, STEL, TWA, run time in hours and minutes, temperature in degree C, datalog mode (or enable / disable datalogging operation in manual datalog mode), LEL/VOC gas names, printing and communication with a PC options. The user cannot get into the calibration mode from display mode, so the user cannot do calibration and cannot change any of the parameters.

In the **programming** mode, which is the default setting, the user can perform all of the functions of the display

mode. In addition, the user can get into calibration mode, perform calibrations and change any of the parameter in the calibration mode.

The following is the detail explanation of the displays when the [MODE] key is pressed

- 1) The **instantaneous** reading is the actual gas concentration in parts per million (ppm) for toxic or VOC gases, % of volume for oxygen and % of LEL for combustible gases. The reading is updated once per second and is shown in the LCD display.

TOX1	VOC	TOX2
0	0.0	0
0		20.9
LEL		OXY

- 2) The **sensor names** are displayed as:

LEL: for combustible gas sensor

VOC: for PID sensor

OXY: for oxygen sensor

CO, H₂S, etc.: for up to 2 toxic sensors

TOX1	VOC	TOX2
CO	VOC	H₂S
LEL		OXY
LEL		OXY

- 3) The **Peak** reading is the highest reading of each gas concentration since the monitor was turned on. The reading is updated at one-second intervals and is shown in the LCD display with “Peak” message.

TOX1	VOC	TOX2
5	2.0	3
10	Peak	20.9
LEL		OXY

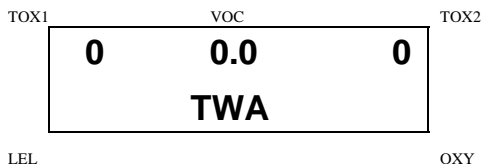
- 4) The **Minimum** reading is the lowest reading of each gas concentration since the monitor was turned on. The reading is updated at one-second intervals and is shown in the LCD display with “Min” message.

TOX1	VOC	TOX2
0	0.0	0
0	Min	19.9
LEL		OXY

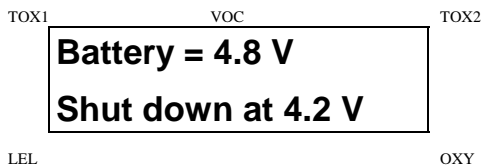
- 5) The **STEL** reading is the last 15 minute average reading of the gas concentration. The reading is updated once per minute and is shown in the LCD display with “STEL” message. For the first 15 minutes, “*****” will be displayed. This reading applies to VOC and toxic gases only.

TOX1	VOC	TOX2
0	0.0	0
STEL		
LEL		OXY

- 6) The **TWA** reading is the accumulated reading of the gas concentration divided by 8 hours since the monitor was turned on. The reading is updated once a minute and is shown in the LCD display with “TWA” message. This reading applies to VOC and toxic gases only.



- 7) The **battery voltage** reading is the current battery voltage in volts. The reading is updated once per second and is shown in the LCD display. The shut down voltage is also shown. Note: A fully charged battery pack should show 4.8 volts or higher. When the battery voltage falls below 4.4 volts, a flashing “Bat” will appear as a warning message. This means there is 20-30 minutes run time left before the monitor will be turned off automatically, when the battery voltage falls below 4.2 volts.



- 8) The **run time** reading is the accumulated “On” time in hours and minutes since the monitor was turned on. The reading is updated at one minute intervals and is shown in the LCD display together with the current date, time and temperature.

TOX1	VOC	TOX2				
<table style="width: 100%; border-collapse: collapse;"> <tr> <td style="width: 50%; text-align: center;">8/3/96</td> <td style="width: 50%; text-align: center;">8:30</td> </tr> <tr> <td style="text-align: center;">On = 3:50</td> <td style="text-align: center;">20°C</td> </tr> </table>			8/3/96	8:30	On = 3:50	20°C
8/3/96	8:30					
On = 3:50	20°C					
LEL		OXY				

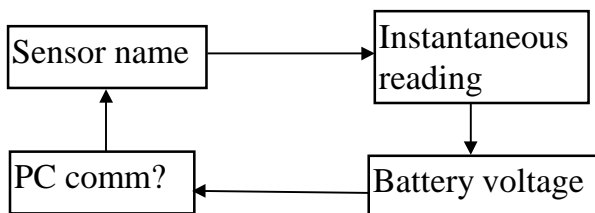
- 9) The **datalog** menu shows the current datalog mode. If manual datalog mode is selected, the menu will prompt the user to turn on or off datalogging. Pressing the **[Y/+]** key while “Start Datalog?” message is displayed turns on the datalogging. Likewise, pressing the **[Y/+]** key while “Stop Datalog?” message is displayed turns off the datalogging.
- 10) The monitor will display the selected **LEL** and **VOC gas name** if the combustible sensor and PID sensor are installed. When an LEL or VOC gas is selected, the “calculated” gas concentration based on the built-in correction factor for that specific gas will be displayed.
- 11) **Print Reading?** asks for printing out of the gas concentration reading. If a serial printer is connected and ready, pressing the **[Y/+]** key will print out the reading.

- 12) The **Communicate with PC?** menu allows the user to upload data from the MultiRAE PLUS to a Personal Computer (PC) or download configuration information from a PC to the MultiRAE PLUS. Press the **[Y/+]** key and the LCD displays the message “Monitor will pause, OK?” to remind the users that during PC communication, there will be no real time monitoring of the gas concentration. Press **[Y/+]** to proceed and the monitor enters the communication standby mode. The LCD then displays “Ready...” Connect the monitor to the serial port of a PC. The monitor is then ready to receive any command from a PC (see Section 5 for details on communications between the MultiRAE PLUS and a PC).

Note: When the monitor is in communication standby mode, it stops monitoring the gas concentration and stops the datalogging. Datalogging must be manually restarted when exiting the communication standby mode, unless it is in automatic datalogging mode.

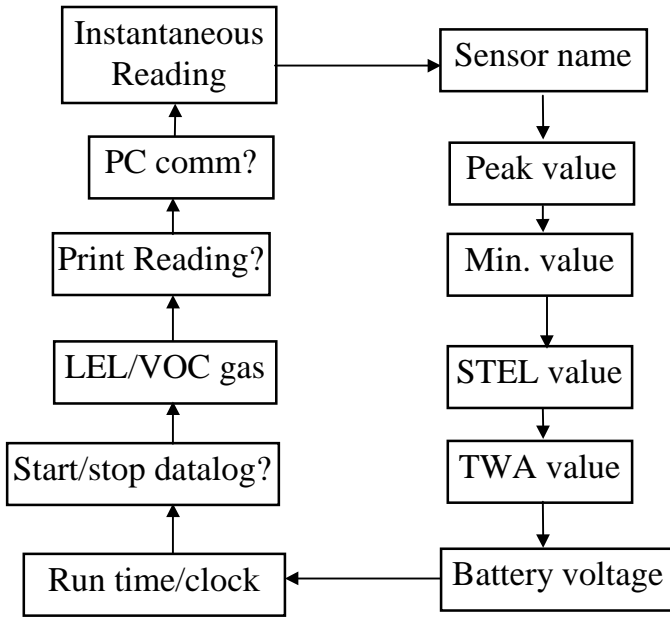
Displays in text mode:

The four displays are arranged in a “round robin” order:



Displays in display or program mode:

The twelve displays are arranged in a “round robin” order:



To choose a specific display, press the **[MODE]** key one or more times until the desired display appears.

Display time out

In all displays, the LCD will automatically return to the instantaneous reading (in display or program mode) or sensor name (in text mode) after a one-minute time out interval if no key is pressed.

2.5 Alarm Signals

The built-in microcomputer updates the gas concentrations every second and compares them with the programmed alarm limits (TWA, STEL, and two instantaneous gas concentration alarm limit settings: Low & High). Whenever the concentration exceeds the sensors' preset limits, the loud buzzer and red flashing LED are activated immediately to warn the user of the alarm condition.

In addition, the MultiRAE PLUS will alarm if one of the following conditions occurs: battery voltage falls below a pre-set level (4.4 V), failure of the UV lamp, LEL sensor off, pump stall or when the datalog memory is full. When the low battery alarm occurs, there will be approximately 20-30 minutes of operating time remaining. When the battery voltage falls below 4.2 V, the monitor will be turned off automatically.

Alarm Signal Disabled: It is extremely important to note that during the following conditions, the alarm signals are disabled:

- 1) In PC communication standby mode.**
- 2) In calibration mode (including reviewing datalog data).**

During these modes of operation, real time monitoring of the gas concentration stops. None of the gas concentrations will be calculated, including Peak, STEL and TWA.

Alarm Signal Latching:

It is possible to setup the MultiRAE PLUS from a PC or in programming mode so that when an alarm condition occurs, the alarm signals stay on even after the alarm condition is no longer present. This is called the “latching alarm” mode. The alternative mode is to automatically reset the alarm signal when the alarm condition is cleared. The default alarm mode is automatic reset (see Chapter 4 or 5 for details on how to set alarm mode).

Alarm Signal Summary:

The various alarm signals are summarized here:

Condition	Alarm Signal
Gas exceeds “High Alarm” limit	3 beeps/flashes per second plus sensor name on LCD
Gas exceeds “Low Alarm” limit	2 beeps/flashes per second plus sensor name on LCD
Gas exceeds STEL	1 beep/flash per second plus sensor name on LCD
Gas exceeds TWA	1 beep/flash per second plus sensor name on LCD
Negative Drift or Over Range	3 beeps/flashes per second plus NEG or OVR name on LCD
Pump failure	3 beeps/flash per second plus “Pump” message on LCD
LEL sensor off	3 beeps/flash per second plus LEL sensor name and “Off” message on LCD

PID lamp failure	3 beeps/flash per second plus “Lamp” message on LCD
Low battery	1 flash per second, 1 beep per minute plus “Bat” message on LCD
Memory full	1 flash per second plus “Mem” message on LCD

Alarm Signal Testing:

Under normal non-alarm conditions, it is possible to test the MultiRAE PLUS LED, buzzer and back light by pressing the [Y/+] key momentarily. The buzzer will beep once and the LED and back light will flash once to indicate that these alarm signals are functioning correctly.

WARNING:

The alarm signals are disabled during PC communication, calibration or datalog review operation. To reduce the risk of exposure to hazardous atmospheres, perform PC communication, calibration or datalog review only in area known to be non hazardous.

2.6 Back Light

The LCD display is equipped with an LED back light to assist in reading the display under poor lighting conditions. This back light can be turned on **manually** by pressing and holding the **[N/-]** key for one second in normal operation. The back light can be turned off by pressing **[N/-]** a second time. If the **[N/-]** key is not pressed, the back light will be turned off automatically after a pre-programmed time-out period to save power.

In automatic mode, the ambient light is sensed and the back light will be turned on **automatically** if the ambient light is below a threshold level. The back light will be turned off automatically when the ambient light exceeds the threshold level.

(See Chapter 4 or 5 for details on how to set back light mode and time out period from the monitor or from PC. See Chapter 8 for details on how to set the ambient light threshold level.)

Note: The LED back light consumes a higher amount of energy from the battery and shortens the operating time of the monitor by 20 - 30%.

2.7 Preset Alarm Limits and Calibration

The MultiRAE PLUS Multi-gas Monitor is factory calibrated with standard calibration gas, and is programmed with default alarm limits as listed below. (refer to Chapter 4 or Chapter 5 for programming procedures if new calibration or alarm limits is required).

Table 2.2

Factory Calibration and Preset Alarm Limits						
Gas ppm	Cal Gas / Balance	Unit	TWA	STEL	Low	High
CO	50 / Air	ppm	35	100	35	200
H ₂ S	25 / N ₂	ppm	10	15	10	20
SO ₂	5 / N ₂	ppm	2	5	2	10
NO	25 / N ₂	ppm	25	25	25	50
NO ₂	5 / Air	ppm	1	1	1	10
Cl ₂	10 / N ₂	ppm	0.5	1	0.5	5
O ₂	20.9 / N ₂	%Vol	-	-	19.5	23.5
CH ₄	50 / Air	%LEL	-	-	10	20
H ₂ CN	10 / N ₂	ppm	5	5	5	50
NH ₃	50 / N ₂	ppm	25	35	25	50
PH ₃	5 / N ₂	ppm	0.3	1	1	2
VOC*	100 / Air	ppm	10.0	25.0	50.0	100

***Note:** 100 ppm isobutylene gas is used for VOC gas calibration

2.8 Integrated Sampling Pump

The MultiRAE PLUS Multi-gas Monitor includes an integrated sampling pump. This is a diaphragm pump providing about 300 cc per minute flow rate at the high setting with the standard filters in place.

A low pump speed of about 200 cc per minute is the factory default setting, which will increase the battery life by about 5% and result in an increased LEL sensor lifetime (see Chapter 4 or 5 for details of how to select the pump speed).

The high pump speed setting is required for vapors that are especially reactive or adsorb easily to instrument surfaces. Such vapors include Cl_2 , PH_3 , NH_3 , HCN , and semi-volatile organic compounds like diesel fuel and jet fuels. For such compounds it is helpful to remove the water trap filter for normal calibration and operation, which will increase the pump speed to about 350 cc/min. It is also desirable to use inert connecting and sampling tubing, such as Teflon instead of Tygon, and to make connections as short as possible.

The pump is turned on automatically when the monitor is turned on and remains on during normal operation.

If liquid or other objects are sucked into the water trap in the inlet port and cause the pump to stall, the electronics of the monitor will detect the obstruction and shut down the pump immediately. The alarm will be activated and a

flashing error message “Pump” will be also displayed in the LCD display.

The user needs to acknowledge the pump shut off condition by pressing the **[Y/+]** key to re-start the pump. Different pump shut-off thresholds are desired for the two pump settings; this value can be adjusted in the Special Diagnostic Mode as described in Section 8.1.

2.9 Datalogging

The MultiRAE PLUS Multi-gas Monitor calculates and stores the gas readings based on a user-specified datalogging period and the type of measurement. Two types of gas measurements, average or peak concentration can be stored for each sensor during each datalogging interval. The datalogging interval can be programmed from one second to 60 minutes in one-second increments. In addition, time stamp, user ID, site ID, serial number, last calibration date, and alarm limits are also stored. All data is retained in a non-volatile memory so that it can be downloaded at a later time to a PC.

Datalog Options

There are four ways to initiate the datalog operation:

- **Automatic:** Start and stop datalogging automatically when the monitor is turned on and off.
- **Manual:** Start and stop datalogging by pressing a key manually. There is a timer available to setup the maximum datalogging time.
- **Periodic:** Start and stop datalogging daily based on a preset time (hour and minute).
- **Scheduled:** Start and stop datalogging based on a preset date and time (month, date, hour and minute).

Choose a datalog option

Most of the datalogging options can be programmed from the monitor. Additional options can be programmed using a PC and downloaded to the monitor (see Chapter 5 for details on how to program various datalogging options).

Start/stop datalogging manually

If manual datalogging mode has been selected from the normal operation menu, toggle through the menu using the **[MODE]** key until the **Start Datalog?** prompt is displayed. Pressing the **[Y/+]** key turns on datalogging. Likewise, pressing the **[Y/+]** key while **Stop Datalog?** is displayed, turns off datalogging.

The other three datalogging options will start and stop automatically without any user intervention:

Datalogging event

Each time a datalogging operation is initiated, a datalog event is created. Information, such as start time, datalogging period, alarm limits, etc. will be recorded in the event header, followed by the measurement data. If more than 900 measurement intervals are recorded in one event, a new event will be created automatically.

Datalogging pause

Under the following conditions, the datalogging will be paused automatically:

- 1) When entering programming mode, datalogging will stop. Upon exiting the programming mode, the datalogging will resume.
- 2) When entering PC Communication standby mode, datalogging will stop. Upon exiting the PC communication standby mode, datalogging will resume **only if datalogging mode was set to automatic mode.**

In either case, a new datalog event will be created when the datalogging is resumed.

3. OPERATION OF ACCESSORIES

The accessories for MultiRAE PLUS include:

- Battery charger
- Alkaline battery adapter
- Water trap filter and remote sampling probe
- Dilution fitting
- Calibration adapter

WARNING:

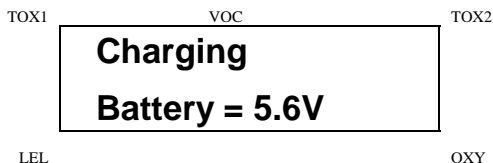
To reduce the risk of ignition of hazardous atmospheres, recharge battery only in area known to be non hazardous. Remove and replace battery only in area known to be non hazardous.

Ne charger les batteries que dans emplacements désignés non dangereuse.

3.1 Battery Charging Operation

The charging circuit of the MultiRAE PLUS is built into the monitor. It only needs a regular AC to 12V DC adapter (wall mount transformer) to charge the monitor.

1. Connect the AC adapter (or the optional automotive charging adapter) to the DC jack on the MultiRAE PLUS monitor.
2. The display will ask whether a discharge cycle (see NOTE on next page) is required, press **[N/-]** key, and the charging function will begin. The display will show "Charging" "Battery = x.x V." If a key is not pressed within ten seconds, the charging will begin automatically.



3. The LED should be red in color when charging. If the battery is fully charged, the LED will change from red to green. The red color indicates that the battery is being charged. The green color indicates that the battery is fully charged. The display will also indicate "Fully charged." A completely discharged MultiRAE PLUS monitor will be charged to full capacity within 10 hours.

NOTE 1: The latest version of the MultiRAE PLUS monitor has a smart charging circuitry and algorithm to prevent overcharging; removing the charger is not necessary.

NOTE 2: After one charging cycle the monitor recognizes whether Li ion or NiCd batteries are installed. When NiCd batteries are present, the firmware displays: **Deep Discharge?** when the AC adapter is connected. Perform occasional deep discharge to the NiCd battery to maintain full capacity by pressing the **[Y/+]** key when this message appears. The battery will begin deep discharge followed by a charge cycle. The deep discharge is useful to remove memory effects of the NiCd battery, so that the charge capacity is maintained.

The battery of the MultiRAE PLUS monitor will be drained slowly even if the monitor is turned off. If the monitor has not been charged for 5-7 days, the battery voltage will be low.

The factory supplied battery is designed to last for 10 hours of normal operation (no alarm, no back light condition) for a new battery under the best condition. As the battery becomes older or is subject to adverse conditions (such as cold ambient temperature), the battery capacity may be reduced significantly. Li ion batteries do not have a memory effect and tend provide longer run time even at the same mAh rating.

3.2 Alkaline Battery Adapter

An alkaline battery adapter is supplied with each MultiRAE PLUS kit. It accepts four AA size alkaline batteries and can be used in place of the Li ion or NiCd battery pack to provide approximately 12-14 hours of operation. The adapter is intended to be used in emergency situations when there is no time to charge the rechargeable batteries.

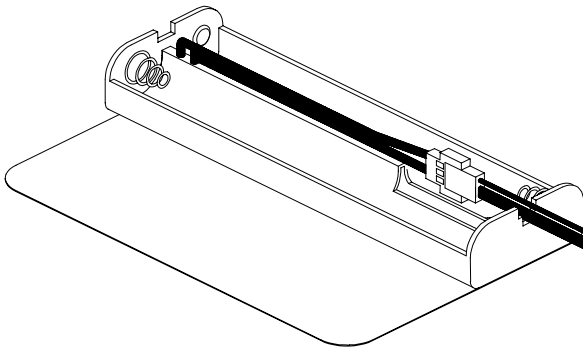


Figure 3-1 Alkaline Battery Adapter

To install the adapter, remove the cover of the monitor. Unplug the Li ion or NiCd battery pack from the battery connector and plug the alkaline battery adapter into the battery connector.

The internal charging circuit will automatically detect the alkaline battery adapter and prevent charging of the battery.

Note: The AA Alkaline battery adapter supplied by RAE Systems Inc. is intrinsically safe!

3.3 Water Trap Filter

The water trap filter is made of PTFE (Teflon[®]) membrane with a 0.2 micron pore size to prevent liquid water from being sucked into the sensor manifold, which would cause extensive damage to the monitor. It will also prevent any dust from entering the monitor and will prolong the operating life of the sensors.

To install the water trap filter, simply slide the Tygon tubing onto the ribbed inlet port on the monitor. A male Luer connector fits to the female Luer of the filter. To remove the filter, disconnect the Luer connector.

The water filter should not be used for normal calibration and operation with vapors that are especially reactive or adsorb easily to surfaces. Such vapors include Cl_2 , PH_3 , NH_3 , HCN , and semi-volatile organic compounds like diesel fuel and jet fuels. For these compounds the high pump speed setting should be used (see Section 2.8). It is also desirable to use inert connecting and sampling tubing, such as Teflon instead of Tygon, and to make connections as short as possible.

3.4 Remote Sampling Probe or Tygon Tubing

An optional 6-foot Teflon remote sampling probe with a telescoping handle or a 15-foot Tygon tubing are handy accessories for users to probe areas which are difficult to reach, such as ceilings, storage tanks, underground man-holes, etc. Connect the male Luer connector at the end of the remote sampling probe or the Tygon tubing to the female Luer connector on the water trap filter. The remote sampling probe or the Tygon tubing is ready for operation.

Teflon remote sampling tubing should be used for reactive gases such as Cl_2 , PH_3 , NH_3 , HCN , and for semi-volatile organic compounds like gasoline and jet fuels. A few feet of Tygon tubing can completely absorb a kerosene-type fuel. Tygon can be used for the common confined space entry gases including CO , H_2S , and CH_4 .

3.5 Dilution Fitting

An optional dilution fitting can be installed together with the remote sampling probe or Tygon tubing on the gas inlet port to dilute the gas samples. This fitting is needed if the gas sample does not contain more than 10% oxygen. This is due to the fact that the combustible sensor will not function correctly when the oxygen concentration falls below 10%. The dilution fitting will increase the oxygen concentration so that the combustible sensor can still be used under oxygen deficient conditions. The other use of the dilution fitting is to measure the combustible, VOC or toxic gas when the concentration exceeds the upper limit of the sensor range.

See the dilution fitting instructions for proper installation. Make sure to set the dilution ratio in the programming mode (see Section 4.8) so that the correct gas reading will be displayed when the dilution fitting is used.

WARNING: For this application, the user must have the monitor or dilution air inlet located in a clean atmosphere outside the confined space and use a remote access probe or Tygon tubing to sample the gas under test.

3.6 Calibration Adapter

There are two types of calibration adapter for the MultiRAE PLUS monitor. The PGM50-4P or PGM50-5P model has a built-in sampling pump. Therefore, the calibration adapter for these two models is a simple 6 inch Tygon tubing with a male Luer connector on one end. During calibration, simply connect the tubing to the water trap filter on MultiRAE PLUS and the calibration gas on the other side. Alternatively, the calibration gas can be sampled 1) from a Tedlar gas bag, 2) from an open cup or tube using flowing calibration gas exceeding the pump demand, or 3) using a demand flow regulator directly from the gas cylinder.

The PGM50-4 model does not have a built-in sampling pump. A special diffusion calibration adapter is provided. During calibration, place this adapter over the front cover of the monitor and connect the Tygon tubing to the regulator on the gas bottle.

4. PROGRAMMING OF MULTIRAE PLUS

The MultiRAE PLUS Monitor is built with a microcomputer to provide programming flexibility for the user. Authorized users can re-calibrate the monitor, change the alarm limits, change site ID, user ID, datalogging period, real time clock, etc.

Programming is menu-driven to provide intuitive end-user operation. The display shows the menu options, and the key pad is used for menu selection and data entry.

Note: The real time monitoring of the gas concentration continues while in the programming mode. However, during the calibration or review datalog procedures, the real time monitoring will pause until the procedures are completed. In addition, entering programming mode will pause the datalogging operation automatically. After exiting programming mode, datalogging operation will resume.

4.1 Programming Mode

The MultiRAE PLUS has three user modes: **text**, **display** and **programming** mode. The user can access the programming function only if they are in the programming mode (or from **text** mode with password). If the monitor is set to **display** mode, the user cannot enter the programming menu. In this case, the user mode can be changed only through a PC (see Section 5.0 for details on setting up the user mode).

The **programming** mode allows users to change the setup in the monitor, calibrate the monitor, modify the sensor configuration and enter user information, etc. The programming functions are organized in a three tier menu structure. Table 4.1 shows the first tier of the programming menu. Each menu item includes several sub-menus to perform additional programming functions. Appendix A shows a more detailed menu tree structure.

Table 4.1

Programming Menu
Calibrate Monitor?
Change Alarm Limits?
View or Change Datalog?
Change Monitor Setup?
Change Sensor Configuration?

Security Level

There are three levels of security in the MultiRAE PLUS programming mode to provide further protection against unauthorized changes to the monitor alarm settings and other settings. The **level 2** security allows a user to enter programming mode without any restriction. This is the default security setting. The **level 1** security requires a 4 digits password to enter programming mode. **Level 0** security allows a user to enter the programming mode without any password checking, as in the level 2. However, it does not allow a user to save any changes to the alarm limits, real time clock, correction factor, user and site information, etc. A user can still perform calibration with level 0 security. The security level must be set using a PC (see Chapter 5 for details on setting up the security level).

Once inside the programming mode, LCD will display the first menu. Each subsequent menu item can be viewed by pressing the **[N/-]** repeatedly until the desired menu is displayed. To enter the sub-menu of a particular menu, press the **[Y/+]** key and the sub-menu will be displayed.

To exit the programming mode and return to the normal operation, press the **[MODE]** key at any of the first tier menu displays.

4.2 Keys for Programming Mode

The three keys perform a different set of functions during the programming mode as summarized below.

Table 4.2

Key	Function in Programming Menu
[MODE]:	Exit menu when press momentarily or exit data entry mode when pressed and held for 1 second
[Y/+]:	Increase numerical value for data entry or confirm (yes) for a question
[N/-]:	Decrease numerical value for data entry or deny (no) for a question

4.3 Entering into Programming Menu

1. Turn on the MultiRAE PLUS monitor (refer to Section 2.3 for the power on sequence).
2. Press and hold down both **[MODE]** and **[N/-]** keys for three seconds to enter programming mode. Note: This is to prevent a user from entering the programming mode by accident.
3. If the security level is 0 or 2, after holding down two keys for 3 seconds, the monitor should enter the programming mode and the first menu item “Calibrate Monitor?” will be displayed.
4. If the security level is 1, or user mode is text mode, after holding down the two keys for three seconds, the display will show “Enter Password = 0000” with the left-most digit flashing. The user should enter a password starting from this flashing digit.

Note 1: Prior to factory shipment, the MultiRAE PLUS monitor was installed with “0000” as the default password.

Note 2: For added security, “0000” is always displayed instead of the actual password at this step.

5. If the correct digit value is not “0”, use the **[Y/+]** key or **[N/-]** key to increase or decrease the digit value. Then press **[MODE]** key momentarily to confirm the digit value. Display shows the actual digit entered and moves the flashing cursor to the next digit (to the right).
6. Repeat Step 5 until all four digits are entered. Press and hold **[MODE]** for one second.
7. If the entered password is correct, the monitor enters the programming menu. The first menu item “Calibrate Monitor?” will be displayed.
8. If the password is incorrect, the display shows “Wrong Password???” and returns to the regular display of instantaneous gas readings.
9. If the User mode is set to **display** mode, a message “Display Only! Cannot enter...” will be shown.

4.4 Calibration of MultiRAE PLUS Monitor

CALIBRATION WARNINGS:

The calibration of all newly purchased RAE Systems instruments should be tested by exposing the sensor(s) to known concentration calibration gas before the instrument is used or put into service.

For maximum safety, the accuracy of the MultiRAE PLUS should be checked by exposing the sensor(s) to known concentration calibration gas before each day's use.

In programming mode, the user may re-calibrate the sensors in the MultiRAE PLUS monitor. This is a two-point calibration process using “fresh air“ and the standard reference gas. First, a “fresh air” which contains 20.9% oxygen and no detectable VOC, toxic or combustible gases is used to set the zero point for each sensor. Then a standard reference gas, which contains a known concentration of a given gas, is used to set the second point of reference (also known as span gas). The two-point calibration procedure is detailed below. Table 4.3 shows the sub-menus for calibration operations.

Table 4.3

Calibration Sub-Menu
Fresh Air Calibration?
Multiple Sensor Calibration?
Single Sensor Calibration?
Modify Span Gas Value?
Change LEL/VOC Span Gas?

The preferred calibration method for monitors with pumps is to place the calibration gas in a gas sample bag (Tedlar® bag). Connect the bag to the MultiRAE PLUS gas inlet port when you are ready to perform the calibration. Users may find it more convenient to connect the MultiRAE PLUS directly to the gas bottle using a flow-on-demand type regulator. Calibration through such a regulator will produce similar results to the sample bag method with most gases, but flow-on-demand regulators are not recommended with H₂S. In an emergency, the MultiRAE PLUS can also be calibrated directly from a fixed flow regulator with a flow rate between 0.5 and 1.0 liters per minute.

MultiRAE PLUS diffusion monitors must be calibrated using a fixed flow regulator with a flow rate between 0.5 and 1.0 liters per minute. Diffusion monitors are supplied with a special calibration adapter that covers the gas diffusion port.

The calibration adapter links up the inlet port of the MultiRAE PLUS Monitor to the gas sample bag (see Figure 4-1).



Figure 4-1 Connection of Calibration Gas

MultiRAE PLUS diffusion monitors must be calibrated using a fixed flow regulator with a flow rate between 0.5 and 1.0 liters per minute. Diffusion monitors are supplied with a special calibration adapter that covers the gas diffusion port.

4.4.1 Fresh Air Calibration

This procedure determines the zero point of the sensor calibration curve. To perform fresh air calibration, the calibration adapter and a bottle of “fresh” air (optional) are required. The “fresh” air is clean dry air with 20.9 % oxygen concentration and without any organic, toxic or combustible gases or impurities. If such an air bottle is not available, any clean ambient air without detectable contaminant can also be used. A charcoal filter should be used if one is not sure of the ambient air’s purity.

1. “Calibrate Monitor?” is the first menu item in Table 4.1. Press **[Y/+]** to perform calibration. The first sub-menu shows: “Fresh Air Calibration?”
2. If the “fresh” air bottle is available, twist on the calibration adapter over the inlet port of the MultiRAE PLUS Monitor and connect the other end of the tube to the fresh gas bottle. If the “fresh” air bottle is not available, simply leave the monitor in an area free of any detectable vapor.
3. Press the **[Y/+]** key to start “fresh air calibration” of the monitor. The display shows “zero ...in progress” followed by the name of each sensor and the message “zeroed”. The display should show a reading of “20.9” for the oxygen sensor and “0.0”, or a very small number, for all other sensors.
4. After about a 5 second pause, the display will show the message “Zero Cal Done!” and move to the next sub-menu “Multiple Sensor Calibration?”

4.4.2 Multiple Sensor Calibration

This function simultaneously determines the second point of calibration curves for multiple sensors in the monitor.

Mixed standard reference gases is needed to perform this procedure. The user can choose several gas mixtures to be used in multiple-sensor calibration. Connect the tube to the sampling bag filled with mixed gas as shown in Figure 4-1.

- Continuing from Step 4 of the previous Section, the display should show “Multiple Sensor Calibration?” Press the **[Y/+]** key. The display shows all the pre-selected gases for the sampling bag filled with mixed gas and “OK?” question. Press **[Y/+]** key to accept the multiple sensor selection and start the calibration, or press the **[N/-]** key to modify the sensor selection and go to Step 7.

TOX1	VOC	TOX2
CO	----	H ₂ S
LEL	OK?	OXY
LEL		OXY

- Turn on the valve of the sampling bag to start the flow of the span gas. Display shows “Apply Mixed Gas” and will wait for the calibration gas to reach the sensor. When the calibration gas has reached the sensor the display will show “calibration in progress... 60” with the countdown timer shows the number of remaining seconds while the monitor performs calibration. When the countdown timer reaches 0, the display shows the name of each sensor, the message “cal’ed!” and the calibrated values for each gas. If no gas has reached the sensor after 60 seconds, the display will show “No gas flow...” and abort the calibration.

Note: the readings should be very close to the span gas values. After about 5 seconds pause, the display will show the message “Span Cal Done! Turn Off Gas”

3. This completes the multiple sensor calibration procedure and moves to the next sub-menu item.
4. Turn off the flow of gas. Disconnect the calibration adapter from the MultiRAE PLUS Monitor.
5. If the sensor failed the calibration, the sensor name and an error message “failed, continue?” will appear. Press the **[N/-]** or **[MODE]** key to abort the calibration and move directly to the next sub-menu item. Press the **[Y/+]** key to continue the next sensor calibration. In either case, the calibration data for the current sensor is not changed.
6. From Step 1, if the **[N/-]** key is pressed, the display shows all the sensor names which are selected for multiple sensor calibration with the cursor blinking at the first sensor location.

TOX1	VOC	TOX2
CO*	- - - -	H ₂ S*
LEL*	OK?	O ₂
LEL		OXY

Press the **[Y/+]** key to select the sensor and the **[N/-]** key to de-select the sensor. A previously selected sensor will show an “*” next to the sensor name. A

previously de-selected sensor will not show an “*” next to the sensor name.

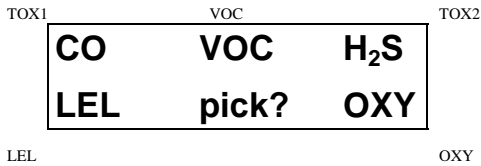
7. Press the **[MODE]** key momentarily to move from one sensor location to the next one. Repeat Step 7 until all of the sensors which need to be calibrated during multiple sensor calibration are selected. Press and hold the **[MODE]** key for 1 second to save the new sensor selection.
8. The display shows “Save?” To confirm the new selection, press the **[Y/+]** key to accept the change and continue on with Step 2. Press the **[N/-]** key or the **[MODE]** key to discard the change and to continue on with Step 2.

Cross Sensitivity: Some sensors may show cross sensitivity to other gases. Therefore, it is important to choose the gas mixture carefully for the multiple sensor calibration to avoid erroneous calibration due to cross sensitivity. For example, some VOC gases are known to cause erroneous readings by the CO sensor. In general, it is recommended to calibrate the two toxic sensors, combustible and oxygen sensor with a bottle of mixed gas using the multiple sensor calibration procedure and to calibrate the PID sensor with a bottle of a single VOC gas.

4.4.3 Single Sensor Calibration

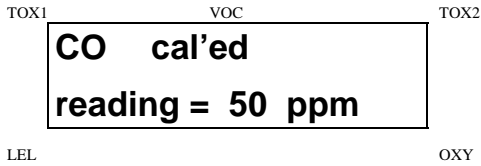
This procedure determines the second point of the sensor calibration curve for a single sensor. A standard reference gas (span gas) is needed to perform this procedure. Table 2.2 shows the standard calibration gas which is typically used as the span gas in the factory (connect the tube to the sampling bag filled with the standard gas as shown in Figure 4-1).

1. Continuing from Step 4 or Step 6 of the previous section, the display should show “Single Sensor Calibration?” Press **[Y/+]** key. The display shows all the installed sensors in the monitor with the cursor blinking at the first sensor location. Press **[Y/+]** key to select the high-lighted sensor and start the calibration, or press **[MODE]** key momentarily to move to the next sensor location.



2. Turn on the valve of the CO gas bottle to start the flow of the span gas. Display shows “Apply CO Gas” and will wait for the calibration gas to reach the sensor. When the calibration gas has reached the sensor the display will show “calibration in progress...60” with the countdown timer shows the number of remaining

seconds while the monitor performs calibration. When the countdown timer reaches 0, the display shows the sensor name and the calibrated value:



If no gas has reached the sensor after 60 seconds, the display will show "No gas flow..." and abort the calibration.

Note: The reading should be very close to the span gas value. After about 5 seconds pause, the display will show the message "Span Cal Done! Turn Off Gas"

3. This completes the single gas calibration procedure for one sensor. The display shows the single gas calibration sub-menu for a user to select another sensor or move to next calibration sub-menu.
4. Turn off the flow of gas. Disconnect the calibration adapter from the MultiRAE PLUS Monitor.
5. Repeat Step 1 to Step 5 to calibrate the next sensor.
6. Press the **[MODE]** key any time during Step 2 to reduce waiting time. If the sensor failed the calibration, the sensor name and an error message "failed, continue?" will appear. Press **[N/-]** or **[MODE]** key to abort the calibration and move directly to the next sub-menu

item. Press [Y/+] key to continue single gas calibration. In either case, the current calibration data will not be changed.

Oxygen Sensor Calibration

The oxygen sensor calibration is slightly different from all other sensors. The oxygen sensor measures a range from 0 to 30% of oxygen in the air. During “fresh” air calibration, the oxygen sensor is calibrated to fixed 20.9% of oxygen. During single sensor calibration, the user can supply a pure nitrogen gas so that the oxygen sensor can be calibrated to 0% of oxygen. The user can also supply other span concentration of the oxygen, e.g. 19.5%, to calibrate the oxygen sensor. A question “0% oxygen?” will be asked. Enter [Y/+] key if the pure nitrogen gas is used to calibrate the oxygen sensor. Otherwise, enter [N/-] key to calibrate oxygen sensor to other span oxygen value. During both single or multiple sensor calibration, the oxygen sensor will be calibrated to the span value defined in Section 4.4.4.

Note: After a “0% oxygen” calibration, the user must perform a fresh air calibration to ensure that the oxygen sensor is calibrated correctly.

Calibration Time Stamp

When a single or multiple sensor calibration is performed, a time stamp will be stored in the non-volatile memory. This information will be included in the datalogging report.

4.4.4 Modify Span Gas Value

This function allows the user to change the span values of the standard calibration gases.

1. “Modify Span Gas Value?” is the next sub-menu item in Table 4.3.
2. Press **[Y/+]** key. Display shows:

TOX1	VOC	TOX2
50	100	25
50	span	20.9

LEL

OXY

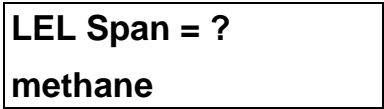
The cursor is blinking at the first digit of the first Span value. If the user wants to modify any one of the span gas value, go to Step 3. Otherwise, press and hold the **[MODE]** key for 1 second to accept the previously stored span gas value and move to the next calibration sub-menu.

3. Starting from the left-most digit of the span gas value, use **[Y/+]** or **[N/-]** key to change the digit value and press **[MODE]** key momentarily to advance to next digit, the cursor will move to the next digit to the right. Repeat this process until all span gas values are entered. Press and hold the **[MODE]** for 1 second to save the new calibration gas value.
4. The display shows “Save?” To confirm the new value press the **[Y/+]** key to accept the change. Press the **[N/-]** key or the **[MODE]** key to discard the change and move to the next calibration sub-menu.

4.4.5 Change LEL/VOC Span Gas

This function allows the user to select a specific LEL or VOC gas to be used as the span gas during LEL or VOC gas calibration.

1. “Change LEL/VOC Span Gas?” is the next sub-menu item in Table 4.3.
2. Press **[Y/+]** key. If LEL sensor is installed and enabled, the display shows:

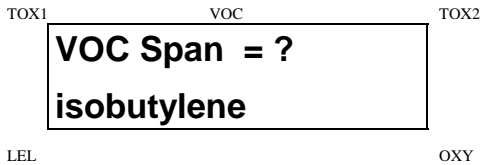


The LCD display shows a rectangular box containing the text "LEL Span = ?" on the top line and "methane" on the bottom line. The text is centered within the box. Above the box, the label "VOC" is centered, and "TOX1" is on the left and "TOX2" is on the right. Below the box, the label "LEL" is on the left and "OXY" is on the right.

Otherwise, the message “No LEL installed” will appear.

3. If the user does not want to change the LEL span gas, press **[Y/+]** key to accept the current selection and exit this sub-menu.
4. If the user wants to select a different LEL span gas, press **[N/-]** key. Then use **[Y/+]** or **[N/-]** key to scroll through a list of gas names until a desired gas name appears in the LCD display, then press **[MODE]** key to select the new gas name.
5. The display shows “Save?” To confirm the new gas selection, press the **[Y/+]** key to accept the change. Press the **[N/-]** key or the **[MODE]** key to discard the change and move to the next display.

6. If the VOC sensor is installed and enabled, the display shows:



- Otherwise, the message “No VOC installed “ will appear.
7. If the user does not want to change the VOC span gas, press [**Y/+**] key to accept the current selection and exit this sub-menu.
8. If the user wants to select a different VOC span gas, press [**N/-**] key first then use [**Y/+**] or [**N/-**] key to scroll through a list of gas names until a desired gas name appears in the LCD display, then press [**MODE**] key to select the new gas name.
9. The display shows “Save?” To confirm the new gas, press the [**Y/+**] key to accept the change. Press the [**N/-**] key or the [**MODE**] key to discard the change and return to the first calibration sub-menu.

4.5 Change Alarm Limits

In the programming mode, the users may change alarm limits of each sensor for the MultiRAE PLUS Monitor. Table 4.4 shows the sub-menus for changing the alarm limits.

Table 4.4

Alarm Limit Sub-Menu
Change High Alarm limit?
Change Low Alarm limit?
Change STEL alarm limit?
Change Average alarm limit?

- The sub-menu item in Table 4.4 allows the user to change the high alarm limit, low alarm limit, STEL alarm limit or average alarm limit. The average alarm limit can be “Running Average” or “TWA (Time Weight Average) depending on the menu selection on “Change Averaging Method” (see Section 4.7.8). Press [N/-] key to circle through the sub-menu. Press [Y/+] key to enter a sub-menu and the display shows “HIGH”, “LOW”, “STEL”, “TWA” or “AVG” with a flashing cursor on the left-most digit of the previously stored alarm limits.

TOX1	VOC	TOX2
200	100.0	20
20	HIGH	23.5
LEL		OXY

TOX1	VOC	TOX2
35	50.0	10
10	LOW	19.5

LEL	VOC	OXY
TOX1		TOX2
100	25.0	15
	STEL	

LEL	VOC	OXY
TOX1		TOX2
35	10.0	10
	TWA	

LEL	VOC	OXY
TOX1		TOX2
1.0	10.0	10
	AVG	

LEL OXY

- To modify this limit, starting from the left-most digit, use the **[Y/+]** or **[N/-]** key to change the digit value and press the **[MODE]** key momentarily to advance to the next digit. The flashing digit will move on to the next digit to its right. Repeat this process until all the new Alarm limits are entered. Press and hold the **[MODE]** key for 1 second to exit data entry mode. If there is any change to the existing value, the display shows "Save?" Press the **[Y/+]** key to accept the new value and move to the next sub-menu. Press the **[N/-]** key to discard the changes. To preserve the previously stored alarm limit, press and hold the **[MODE]** key for 1 second and the monitor will exit data entry mode and move to the next sub-menu.

4.6 View or Change Datalog

MultiRAE monitor calculates and stores the gas readings at a specified interval. The user can review these stored readings or change datalog setup from the programming mode. Users can also program additional datalog options in PC and down loaded them to the monitor (see Section 5.0 for details on how to program additional datalogging options). Table 4.5 shows the sub-menus for datalog options:

Table 4.5

Datalog Sub-Menu
Reset Peak and Minimum?
Clear All Data?
Change Datalog Period?
Select Data Type?
View Datalog?
Enable / Disable Datalog?

4.6.1 Reset Peak and Minimum

This function will reset peak and minimum data stored in the non-volatile data memory.

1. “Reset Peak and Minimum?” is the first sub-menu item in Table 4.5.
2. Press the **[Y/+]** key to clear the peak and minimum data memory. Display shows “Are You Sure?” to re-confirm whether to reset peak and minimum data.
3. Press the **[Y/+]** key again will reset peak and minimum data.
4. Press the **[N/-]** or **[MODE]** key to exit without resetting the data and move to next datalog sub-menu.

Note: STEL and TWA (or AVG) value will not be affected when peak and minimum values are reset.

4.6.2 Clear All Data

This function will erase all data stored in the non-volatile data memory. This does not change STEL, TWA, Peak, minimum concentration and run time values which are stored in the other location.

1. “Clear All Data?” is the second sub-menu item in Table 4.5.
2. Press the **[Y/+]** key to clear the data memory. Display shows “Are You Sure?” to re-confirm the clearing of memory.
3. Press the **[Y/+]** key again will erase all the data memory.
4. Press the **[N/-]** or **[MODE]** key to exit without clearing the data memory and move to next datalog sub-menu.

4.6.3 Change Datalog Period

The datalog period can be programmed from 1 to 3,600 seconds (1 hour).

1. “Change Datalog Period?” is the third sub-menu item in Table 4.5.
2. Press the **[Y/+]** key, the display shows “New Period = 0060” with the left-most digit flashing, where “0060” is the previously stored datalog period.
3. To modify this period, starting from the left-most digit, use the **[Y/+]** or **[N/-]** key to change the digit value and press the **[MODE]** key momentarily to advance to the next digit. The flashing digit will move to the next digit to the right. Repeat this process until all 4 digits of the new period are entered. Press and hold the **[MODE]** key for 1 second to exit data entry mode. If there is any change to the existing value, the display will show “Save?” Press the **[Y/+]** key to accept the new value and exit the datalog sub-menu. Press the **[N/-]** key to discard the changes and move to the next menu option.
4. To preserve the previously stored period, press and hold the **[MODE]** key for 1 second. The monitor will exit data entry mode and move to the next sub-menu item in Table 4.5.

4.6.4 Select Data Type

The user can choose to store either the average or the peak value during each datalog period.

1. “Select Data Type?” is the fourth sub-menu item in Table 4.5.
2. Press the **[Y/+]** key, the display shows the current data type: “Data Type = Average?”
3. Press the **[Y/+]** key to accept the currently displayed data type. Press **[N/-]** key to change to the other data type: “Data Type = Peak?” Press **[MODE]** key to exit this sub-menu and move on to the next sub-menu.
4. If there is any change to the existing selection, pressing the **[y/+]** key, the display will show “Save?” Then, press the **[Y/+]** key to accept or the **[N/-]** key to discard and move to the next sub-menu.

Note: It is necessary to select “Average” data type in order to calculate the correct STEL and TWA data for datalogging report (see Section 5.9).

4.6.5 View Datalog

This function allows the user to review all the data that is stored in the non-volatile data memory.

1. “View Datalog?” is the fifth sub-menu item in Table 4.5. Press the **[Y/+]** key and the LCD display shows the first event number and start date and time of the event.

TOX1	VOC	TOX2
Event # 1 ?		
8/3/96		8:20
LEL		OXY

2. Press **[Y/+]** key to review data of the first event. The LCD display shows the stored data of each sensor and the time stamp:

TOX1	VOC	TOX2
1	0.0	0
2	8:20	20.5
LEL		OXY

3. Press the **[Y/+]** or **[N/-]** key to move forward or backward to view other data of this event. When reaching the end or the beginning of the event, the message “Start of data!” or “End of data!” will appear. Press **[MODE]** key to exit the current event.
4. Press **[N/-]** key at Step 2 to see next event. If there is no more event, the message “no more event! quit?” will appear. Press **[N/-]** key to go back to the first event or press **[Y/+]** key to exit and move to the next sub-menu.

4.6.6 Enable / Disable Datalog

The user can choose to enable or disable the datalogging function on each individual sensor. This allows users to selectively log certain sensor readings of interest.

1. “Enable / Disable Datalog?” is the sixth sub-menu item in Table 4.5.
2. Press **[Y/+]** key. The display shows all the installed sensor in the monitor. A previously selected sensor to be datalogged is marked with an “*” next to the sensor name. The cursor is blinking at the first sensor location. Press **[Y/+]** key to enable the datalogging for the sensor and **[N/-]** key to disable the datalogging.

TOX1	VOC	TOX2
CO*	VOC	H₂S*
LEL	pick	OXY
LEL		OXY

3. Press **[MODE]** key momentarily to move from one sensor location to the next one. Repeat Step 2 until all the sensors which needs to be datalogged are selected. Press and hold **[MODE]** key for 1 second to save the new sensor selection.
4. The display shows “Save?” To confirm the new selection, press the **[Y/+]** key to accept the change. Press the **[N/-]** key or the **[MODE]** key to discard the change and return to the first datalog sub-menu.

4.7 Change Monitor Setup

In the programming mode, users may change monitor setup or enter user information for the **MultiRAE PLUS** monitor. Table 4.6 shows the sub-menus for changing the monitor.

Table 4.6

Monitor Setup Sub-Menu
Change Site ID?
Change User ID?
Change Alarm Mode?
Change User Mode?
Change Real Time Clock?
Change Backlight Mode?
Change Password?
Change Pump Speed?
Change Averaging Method?

4.7.1 Change Site ID

The user can enter an 8 digit alphanumeric site ID in the programming mode. This site ID will be included in the datalog report.

1. “Change Site ID?” and “Change User ID?” are the first and second sub-menu item in Table 4.6.
2. Press [**MODE**] key to choose one of them and press the [**Y/+**] key, the display shows the current site ID: “Site ID = xxxxxxxx” or the current user ID: “User ID = xxxxxxxx” with the left most digit flashing.
3. Press the [**Y/+**] or [**N/-**] key to cycle through all 26 letters and 10 numerals. Press [**MODE**] key momentarily to advance to the next digit. The flashing digit will move to the next digit to the right. Repeat this process until all 8 digits of the new site ID are entered.
4. Press and hold the [**MODE**] key for 1 second to exit the data entry mode and move to the next monitor setup sub-menu.
5. If there is any change to the existing site ID, the display shows “Save?” Press the [**Y/+**] key to accept the new site ID and exit the monitor setup sub-menu. Press the [**N/-**] key to discard the changes and move to the next sub-menu.

4.7.2 Change Alarm Mode

There are two different alarm modes: **latched** and **automatic reset** in MultiRAE PLUS that can be selected from the programming menu.

1. “Change Alarm Mode?” is the third sub-menu item in Table 4.6.
2. Press the **[Y/+]** key, the display shows the current alarm mode selection: “Alarm Mode = Latched?”
3. Press the **[Y/+]** key to accept the currently displayed alarm mode. Press **[N/-]** key to change to the other alarm mode: “Alarm Mode = Auto Reset?” Press **[MODE]** key to exit this sub-menu and move to the next monitor setup sub-menu.
4. If there is any change to the existing selection, pressing the **[y/+]** key the display will show “Save?” Then, press the **[Y/+]** key to accept or the **[N/-]** key to discard and move to the next sub-menu.

4.7.3 Change User Mode

There are three different user modes: **text**, **display** and **programming** in MultiRAE PLUS that can be selected from the programming menu.

1. “Change User Mode?” is the fourth sub-menu item in Table 4.6.
2. Press the **[Y/+]** key, the display shows the current user mode selection: “User Mode = Program?”
3. Press the **[Y/+]** key to accept the currently displayed user mode. Press **[N/-]** key to scroll through the other two user modes. Press **[MODE]** key to exit this sub-menu and move to the next monitor setup sub-menu.
4. If there is any change to the existing selection, pressing the **[y/+]** key the display will show “Disable Program! Are you Sure?” Then, press the **[Y/+]** key to accept or the **[N/-]** key to discard and move to the next sub-menu.

NOTE: If the user mode is changed to **display** or **text** mode, the user can no longer enter the programming menu. Therefore, the user cannot change the user mode back to **program** mode from the monitor. **The only way to change the user mode back to “program” mode is to use a PC and the ProRAE-Suite program or “multicfg” program** (see Section 5 for details).

4.7.4 Change Real Time Clock

The MultiRAE monitor is equipped with a real time clock. The user can enter the correct date and time into the real time clock in the programming mode.

1. The fifth sub-menu item in Table 4.6 is “Change Real Time Clock?”
2. Press [**Y/+**] key, the display shows both the current date and time: “Date = mm / dd” and “Time = hh : mm” with the left most digit of the date flashing.
3. To modify this value, use the [**Y/+**] or [**N/-**] key to change the digit value and press the [**MODE**] key momentarily to advance to the next digit. The flashing digit will move on to next digit to its right. Repeat this process until the new date and time values are entered. Press and hold the [**MODE**] key for 1 second to exit data entry mode. If there is any change to the existing value, the display shows “Save?” Press the [**Y/+**] key to accept the new value and move to next sub-menu. Press the [**N/-**] key to discard the changes and move to next sub-menu.

4.7.5 Change Back Light Mode

The MultiRAE monitor allows a user to choose to turn on and off LCD back light automatically when ambient light falls below or above a threshold level or to turn on and off the back light manually by pressing the [N/-] key.

1. The sixth sub-menu item in Table 4.6 is “Change Backlight Mode?”
2. Press [Y/+] key, the display shows the current back light mode: “Back Light Mode = manual turn on?”
3. Press the [Y/+] key to accept the currently displayed back light mode. Press [N/-] key to change to the other back light mode: “Back Light Mode = manual turn on?” Press [MODE] key to exit this sub-menu and move to the first monitor setup sub-menu.
4. If there is any change to the existing selection, pressing the [Y/+] key the display will show “Save?” Then, press the [Y/+] key to accept or the [N/-] key to discard and move to the next sub-menu.

4.7.6 Change Password

The user can modify the password from the monitor.

1. The seventh sub-menu item in Table 4.6 is “Change Password?”
2. Press the **[Y/+]** key and the display shows the current password: “Enter new password = xxxx” with the left most digit flashing.
3. Press the **[Y/+]** or **[N/-]** key to cycle through all 10 numerals. Press **[MODE]** key momentarily to advance to the next digit. The flashing digit will move to the next digit to the right. Repeat this process until all 4 digits of the new password are entered.
4. Press and hold the **[MODE]** key for 1 second to exit the data entry mode and move to the next monitor setup sub-menu.
5. If there is any change to the existing password, the display shows “Save?” Press the **[Y/+]** key to accept the new password. Press the **[N/-]** key to discard the changes and move to the next sub-menu.
6. The monitor next asks for this value to be confirmed. “Confirm New Password = 0000” with the left most digit flashing. The number must be reentered as before to exit the monitor setup sub-menu. If misentered the second time, the password reverts to its original setting.

4.7.7 Change Pump Speed

There are two speed settings for the pump motor in the MultiRAE PLUS that can be selected from the programming menu: **low** (default) and **high**. The “high” setting should be used for long lengths of tubing or when rapid changes in input conditions are expected. “Low” may be selected when the operating conditions are slow to change. Low may also be used to prolong pump motor life, LEL sensor life and battery run time. Note that this screen may not be present for diffusion models or if speed control is not available.

1. “Change Pump Motor Speed?” is the eighth sub-menu item in Table 4.6.
2. Press the **[Y/+]** key, the display shows the current pump speed selection: “Pump Speed = Low?”
3. Press the **[Y/+]** key to accept the currently displayed pump speed and move to the next monitor setup sub-menu. Press **[N/-]** key to change to the other speed “Pump Speed = High?” Press **[MODE]** key to exit this sub-menu and move to the next monitor setup sub-menu.

4.7.8 Change Averaging Method

There are two methods of calculation used in the averaging of the monitor. Using this selection can cause the calculation to be performed using an eight hour time weighted average (TWA), the default, or a running average (AVG). The display indicator for whichever averaging type is selected will show on the LCD display wherever the average is indicated.

1. “Change Averaging Method?” is the ninth sub-menu item in Table 4.6.
2. Press the [Y/+] key, the display shows the current average selection: “Average Type = TWA?”
3. Press the [Y/+] key to accept the currently displayed type. Press [N/-] key to change to the other selection: “Average Type = Running Average?”, and [Y/+] to select.
4. If there is any change to the existing selection, pressing the [Y/+] key, the display will show “Save?” Then, press the [Y/+] key to accept or the [N/-] key to discard and move to the first setup sub-menu.

4.8 Change Sensor Configuration

In the programming mode, users may change several sensor related configurations of the MultiRAE PLUS monitor. Table 4.7 shows the sub-menus for setting various configurations of the sensors.

Table 4.7

Sensor Configuration Sub-Menu
Change LEL/VOC Gas Selection?
Enable / Disable Sensors?
Change Dilution Ratio?
Change PID Lamp Type?

Before these sub-menus are described, the term “Correction Factor” needs to be explained:

Correction Factor

The PID and LEL sensor used in MultiRAE PLUS are broad band sensors (i.e., they respond to a broad range of gases). Typically, these sensors show a different sensitivity to different gases. The correction factor for a specific gas is defined as:

$$\text{Correction Factor} = \frac{\text{Sensitivity to a calibration gas}}{\text{Sensitivity to a specific gas}}$$

Correction factors are often used to obtain a calculated concentration of a specific gas while using a different gas during calibration.

The MultiRAE PLUS monitor store three sets of correction factors: one for the LEL sensor, one for the 10.6 eV PID sensor and the other for the 11.7 eV PID sensor. Each set consists of 20 to 40 different gases. The user can choose one gas from the list to be the calibration gas and another gas to be the measurement gas.

For example, the user can choose methane as the calibration gas for the LEL sensor and select pentane as the measurement gas. The MultiRAE PLUS monitor will calculate the correction factor between these two gases and convert the measured value of the LEL sensor into equivalent concentration of the pentane gas.

Similarly, the user can choose one VOC gas for calibration and choose another VOC gas for measurement. In addition, the correction factor is different for the PID sensor due to different energy of the UV lamp used in the PID sensor. The user needs to choose the correct type of UV lamp (10.6 eV or 11.7 eV) for the PID sensor in Section 4.8.4.

4.8.1 Change LEL/VOC Gas Selection

This function allows users to choose one of the pre-stored LEL or VOC gases in the monitor and calculate its correction factor relative to the LEL or VOC calibration gas. This factor will then be used during gas measurements to show the equivalent concentration of the selected LEL or VOC gas. The user can also modify this relative correction factor to increase or decrease the gas reading. This allows users to create a custom factor for a specific gas or mixture of gases.

1. “Change LEL/VOC Gas Selection?” is the first sub-menu item in Table 4.7.
2. Press **[Y/+]** key. If an LEL sensor is installed and enabled, the display shows:

TOX1	VOC	TOX2
<p>LEL Gas = ?</p> <p>methane</p>		

Otherwise, the message “No LEL installed” will be displayed and skip to Step 8.

3. If the user does not want to change the LEL measurement gas, press **[Y/+]** key to accept the current gas and skip to Step 6.
4. If the user wants to modify the LEL measurement gas, press **[N/-]** key first, then use **[Y/+]** or **[N/-]** key to scroll through a list of gas names until the desired gas name appears in the LCD display, then press **[MODE]** key to select the new gas name.

5. The display shows “Save new gas?”. To confirm the new gas, press the **[Y/+]** key to accept the change. Press the **[N/-]** key or the **[MODE]** key to discard the change and move to the next step.

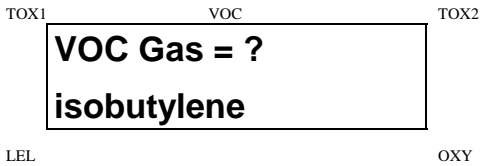
6. Display shows

<small>TOX1</small>	<small>VOC</small>	<small>TOX2</small>
<p>methane</p> <p>LELFactor=1.00 ?</p>		
<small>LEL</small>		<small>OXY</small>

where “1.00” is the calculated correction factor of the selected gas in Step 4.

7. If the user does not want to modify the LEL correction factor, press **[Y/+]** key and go to Step 8. To modify this factor, press **[N/-]** key first. Then starting from the left-most digit, use the **[Y/+]** or **[N/-]** key to change the digit value and press the **[MODE]** key momentarily to advance to the next digit. The flashing digit will move on to next digit to its right. Repeat this process until all 4 digits of the new factor are entered. Press and hold the **[MODE]** key for 1 second to exit data entry mode. If there is any change to the existing value, the display shows “Save?” Press the **[Y/+]** key to accept the new value and exit the gas selection sub-menu. Press the **[N/-]** key to discard the changes.

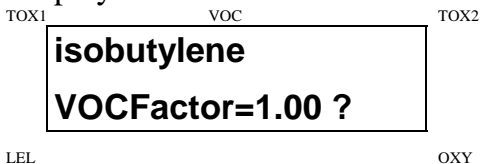
8. If the VOC sensor is installed and enabled, the display will show:



Otherwise, the message “No VOC installed” will be displayed and move to the next sub-menu.

9. If the user does not want to change the VOC measurement gas, press **[Y/+]** key to accept the current gas and go to Step 12.
10. If the user wants to modify the VOC measurement gas, press **[N/-]** key first, then use **[Y/+]** or **[N/-]** key to scroll through a list of gas names until the desired gas name appears in the LCD display, then press **[MODE]** key to select the new gas name.
11. The display shows “Save?” To confirm the new gas, press the **[Y/+]** key to accept the change. Press the **[N/-]** key or the **[MODE]** key to discard the change and move to the next step.

12. Display shows



where “1.00” is the calculated correction factor of the selected gas in Step 10.

13. If the user does not want to modify the VOC correction factor, press **[Y/+]** key and exit the sub-menu. To modify this factor, press **[N/-]** key first. Then starting from the left-most digit, use the **[Y/+]** or **[N/-]** key to change the digit value and press the **[MODE]** key momentarily to advance to the next digit. The flashing digit will move on to next digit to its right. Repeat this process until all 4 digits of the new factor are entered. Press and hold the **[MODE]** key for 1 second to exit data entry mode. If there is any change to the existing value, the display shows “Save?” Press the **[Y/+]** key to accept the new value and exit the gas selection sub-menu. Press the **[N/-]** key to discard the changes.

4.8.2 Enable / Disable Sensor

This function allows the user to selectively enable or disable individual sensors in the MultiRAE PLUS monitor. When a sensor is disabled, the sensor will not measure nor display the gas concentration.

1. “Enable / Disable Sensors?” is the second sub-menu item in Table 4.7.
2. Press **[Y/+]** key. The display shows all the installed sensors in the monitor. A previously enabled sensor is marked by an “*” next to the sensor name. The cursor will blink at the first sensor location. Press **[Y/+]** key to enable the sensor and **[N/-]** key to disable the sensor. A previously disabled sensor will show “----” instead of the sensor name.

TOX1	VOC	TOX2
CO*	VOC	H₂S*
LEL*	pick	OXY*
LEL		OXY

3. Press **[MODE]** key momentarily to move from one sensor location to the next one. Repeat Step 2 until all the sensors which needs to be enabled are selected. Press and hold **[MODE]** key for 1 second to save the new sensor selection.
4. The display shows “Save?” To confirm the new selection, press the **[Y/+]** key to accept the change. Press the **[N/-]** key or the **[MODE]** key to discard the change and move to the next sub-menu.

4.8.3 Change Dilution Ratio

The user can insert an optional dilution fitting on the MultiRAE PLUS gas inlet port to dilute the gas sample. The user can enter a dilution ratio (from 1 to 10) from the programming menu so that the reading can be compensated to show the actual concentration of the gas sample with the dilution fitting.

1. “Change Dilution Ratio?” is the third sub-menu item in Table 4.7.
2. Press the **[Y/+]** key, the display shows the current dilution ratio: “Dilution Ratio = xx” with the left most digit flashing.
3. Press the **[Y/+]** or **[N/-]** key to increase or decrease the value of the digit. Press **[MODE]** key momentarily to advance to the next digit. The flashing digit will move to the next digit to the right. Repeat this process until both digits of the new dilution ratio are entered.
4. Press and hold the **[MODE]** key for 1 second to exit the data entry mode and move to the next sub-menu.
5. If there is any change to the existing dilution ratio, the display shows “Save?” Press the **[Y/+]** key to accept the new ratio and exit the sub-menu. Press the **[N/-]** key to discard the changes and move to the next sub-menu.

4.8.4 Change PID Lamp Type

This programming menu only applies to the monitor which is equipped with a PID detector option. There are two different energy UV lamps available for the PID sensor: **10.6 eV** and **11.7 eV**. The user can select either lamp from the programming menu.

1. “Change PID Lamp Type?” is the fourth sub-menu item in Table 4.7.
2. Press the **[Y/+]** key, the display shows the current PID lamp selection: “PID Lamp = 10.6 eV?”
3. Press the **[Y/+]** key to accept the currently displayed PID lamp. Press **[N/-]** key to change to the other lamp. Press **[MODE]** key to exit this sub-menu and return to the first sub-menu.
4. If there is any change to the existing selection, pressing the **[Y/+]** key the display will show “Save?” Then, press the **[Y/+]** key to accept the **[N/-]** key to discard and return to the first sub-menu.

4.9 Exit Programming Mode

1. To exit programming mode from the first tier menu level (see Table 4.1), press the **[MODE]** key once.
Display shows an instantaneous reading of normal operation mode.
2. To exit programming mode from 2nd tier sub-menu level (see Table 4.2 - 4.6), press the **[MODE]** key twice.
3. To return to programming mode, press and hold down both the **[MODE]** and **[N/-]** keys for 3 seconds as described in Section 4.4.

5. COMPUTER INTERFACE FOR MULTIRAE PLUS

Each MultiRAE PLUS with a datalogging option is shipped with a software package, called ProRAE-Suite, and a serial computer interface cable.

This software package runs on any IBM compatible Personal Computer (PC) under Windows 95®, Windows® 98, Windows NT® 4.0 and later environments. It allows the user to configure the MultiRAE PLUS through a user friendly interface and send the configuration information from the PC to the MultiRAE PLUS monitor. Collected data can also be extracted from the MultiRAE PLUS to the PC in order to perform data analysis, report generation or record keeping. Installation and operation of this software package is described in the following sections.

5.1 Install ProRAE-Suite Software

ProRAE-Suite software package is supplied with the MultiRAE PLUS datalogging monitor. This software package is available on two 3.5” setup diskettes. To install the ProRAE-Suite software, insert the first setup diskette into the “A” or “B” floppy disk drive. Click the **Start** button on the taskbar to display the start menu, then click the **Run** from the start menu to display the **Run** dialog box. If the setup diskette is in disk drive A, type A:\Setup.exe in the **Open** field, as shown in Figure 5-1.

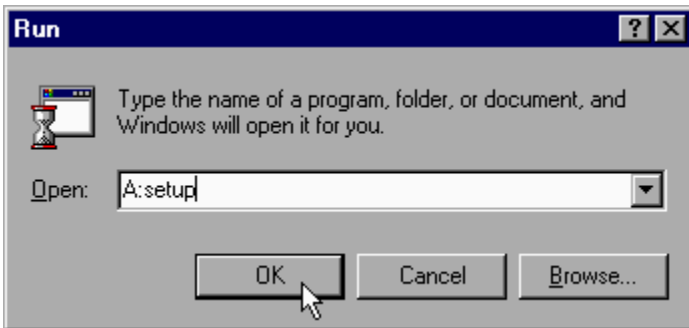


Figure 5-1 Run Dialog Box

Press the **Enter** key on the keyboard or click the **OK** button on the menu to start the setup process. If the user choose the default settings in every steps of the process, the ProRAE-Suite software package will be installed under the default directory: **C:\Program Files\RAE Systems Inc\ProRAE-Suite**. After the software is installed successfully, a new menu item **ProRAE-Suite** is added to

the **Programs** menu. To start the ProRAE-Suite software, click the **Start** button on the taskbar to display the **Start** menu, click the **Programs** menu item to display the **Programs** submenu, then click the **ProRAE-Suite** menu item to display the **ProRAE-Suite** submenu. There are two submenu items under the **ProRAE-Suite** submenu: **ProRAE-Suite** and **Readme**, as shown in Figure 5-2. Click the **ProRAE-Suite** submenu item to start the ProRAE-Suite software.

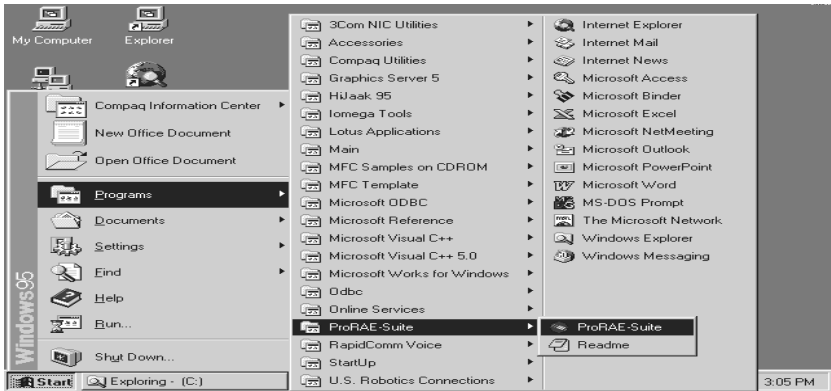


Figure 5-2 Start Menu

5.2 Connect MultiRAE PLUS to PC

The basic kit of a MultiRAE PLUS datalogging monitor includes a serial interface cable. Connect the DB-9 connector side of the cable to the serial port of the PC, and connect another side of the cable to the MultiRAE PLUS monitor.

Turn on the power to the MultiRAE PLUS monitor. Press the [MODE] key several times until the LCD shows “Communicate with PC?” Press the [Y/+] key and the display shows “Monitor will Pause, OK?” Press [Y/+] key to confirm and the display shows “Ready...” to indicate that the MultiRAE PLUS monitor is ready for communication with PC. During the communication session, the PC will directly control the MultiRAE PLUS monitor through the serial link. There is no need for users to press any key on the MultiRAE PLUS monitor during the communication session.

If no data transfer has occurred within one minute, the MultiRAE PLUS monitor will return to instantaneous reading display.

<p>Note: Do not connect to the parallel port of the PC by mistake. The parallel port is usually a 25 pin female D connector on the back of the PC, the serial port is usually a 25 or 9 pin male D connector. If the serial port on the PC is a 25 pin connector, the user needs to use a 25 pin to 9 pin adapter in order to accept the serial cable.</p>
--

5.3 Start ProRAE-Suite Software

To start the ProRAE-Suite software, click the **Start** button on the taskbar to display the **Start** menu, click **Programs -> ProRAE-Suite -> ProRAE-Suite** sub-menu item to start the ProRAE-Suite software. Figure 5-3 shows the main window of the ProRAE-Suite software.

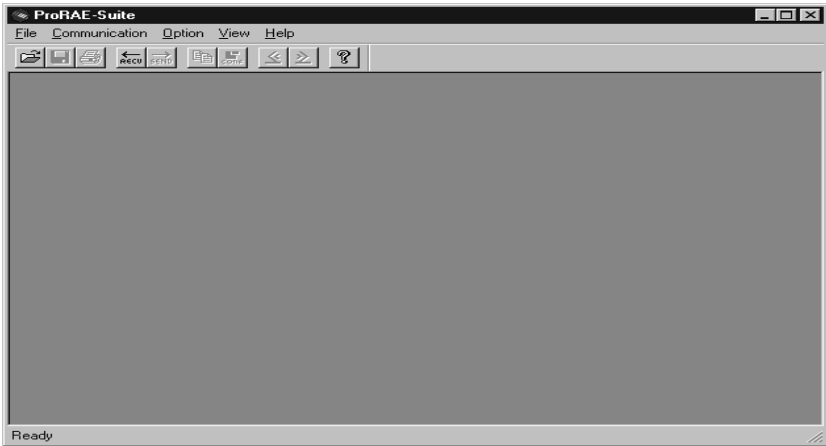


Figure 5-3 ProRAE-Suite Main Window

The functions of ProRAE-Suite software can be divided into three categories:

- 1) Configuration data category. This category includes editing the configuration data file, sending the configuration data to the MultiRAE Plus monitor and receiving the configuration data from the MultiRAE Plus monitor, etc.
- 2) Logged data category. This category includes receiving the logged data from the MultiRAE Plus monitor,

displaying the logged data in different format, exporting the logged data to a tab delimited text file so that it can be read by the Microsoft Excel software, etc.

- 3) Upgrade category. This category includes upgrading the datalog feature of the MultiRAE Plus monitor, and upgrading the firmware in the MultiRAE Plus monitor.

There is a tool bar beneath the menu bar. The frequently used functions are represented in this tool bar in the form of a small icon. For example, the **Receive data** function in the **Communication** sub-menu is represented as a small arrow with the letters "RECV." When the mouse cursor (a small arrow) is positioned near each icon in the tool bar, a short text will also appear at the bottom of the Window to describe the function of this icon.

This tool bar allows users to invoke a function conveniently by clicking on the icon without going through the sub-menus.

5.4 Setup Communication Port

It is necessary to setup the communication port on the ProRAE-Suite software so that the MultiRAE PLUS monitor can communicate with the PC correctly. Figure 5-4 shows the **Setup Port** dialog box. Choose the appropriate port according to the PC's serial port setup.

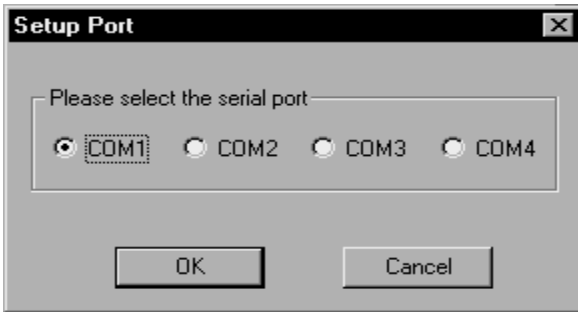


Figure 5-4 Setup Port Dialog

Note: In most PC's, there are two serial ports. Make sure that the serial port selected in the **Setup Port** dialog box matches the actual serial port connected to the MultiRAE Plus monitor. The default serial port for ProRAE-Suite is COM1. If the incorrect serial port is selected, an error message of “error occur during serial port initialization” will appear when a user tries to communicate between the PC and the MultiRAE Plus monitor.

5.5 Processing the Configuration Data

The ProRAE-Suite software allows the user to edit the configuration data, send the configuration data to the MultiRAE Plus, and receive the configuration data from the MultiRAE Plus monitor. The following subsection describes the detail of each operation.

5.5.1 Editing the Configuration Data

There are two different sources of the configuration files. One is loaded from the unit, the other is from a configuration file.

To load and review the configuration of the monitor. From the main menu of the ProRAE-Suite software, select the **Receive Configuration...** menu item from the **Communication** dropdown menu, then click the **OK** if the unit is connected to the communication port and ready.

To load a saved configuration file. From the main menu, select **Open** from the **File...** dropdown menu, a dialog box appears. Select the “Files of type:” to Config Files [*.cfg], as shown in Figure 5-5.

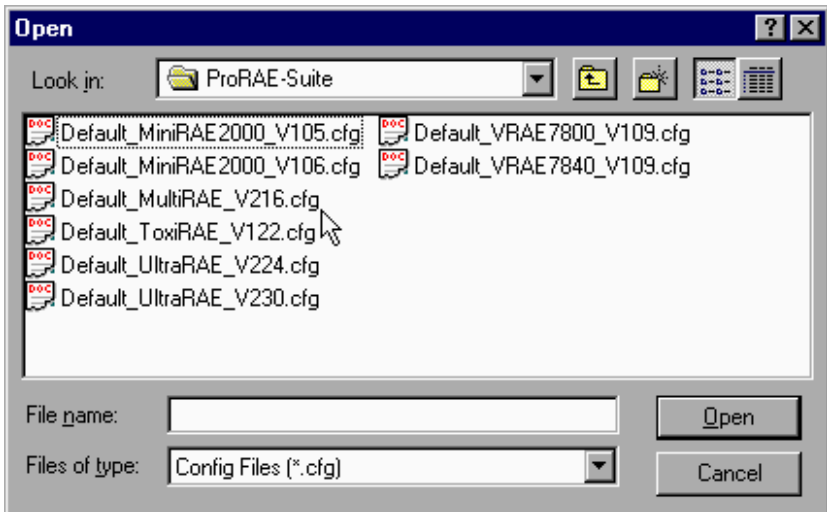


Figure 5-5 Open Dialog Box

There should be one or more configuration files in the file list. Each configuration file has a file extension of “.CFG”. There is one generic MultiRAE Plus configuration supplied with ProRAE-Suite software: **Default_MultiRAE_V###.CFG**, where ### is the version number of the default configuration file. For example, **Default_MultiRAE_V216.cfg** means this file is for MultiRAE monitor and its version is V2.16. Choose a configuration file by highlighting the file name and press the **Enter** key or click the **OK** button on the dialog box.

Once the configuration file is open, the configuration data is displayed in the newly opened client window, as shown in Figure 5-6.

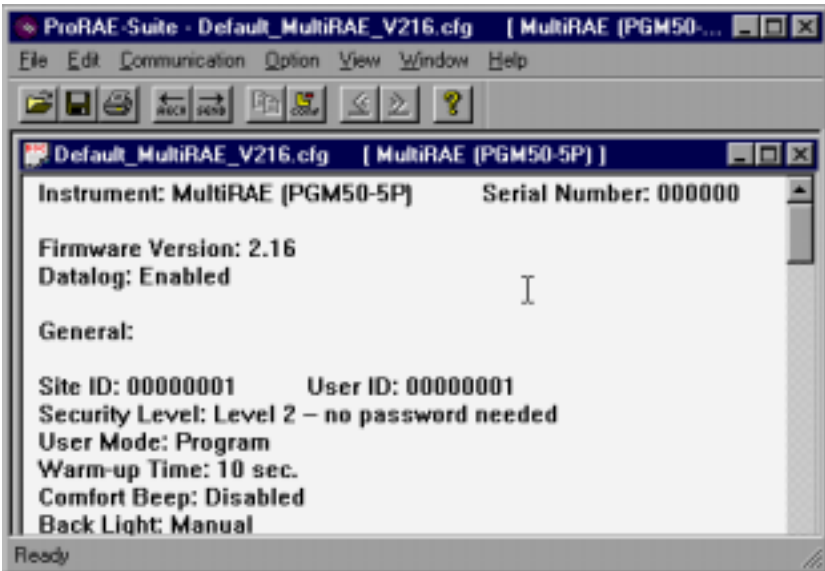


Figure 5-6 Displayed Configuration Data

To edit the opened configuration data file, click the **Edit -> Configuration** menu item or the **Configuration** toolbar button to open the **Edit Configuration File** dialog box, as shown in Figure 5-7.

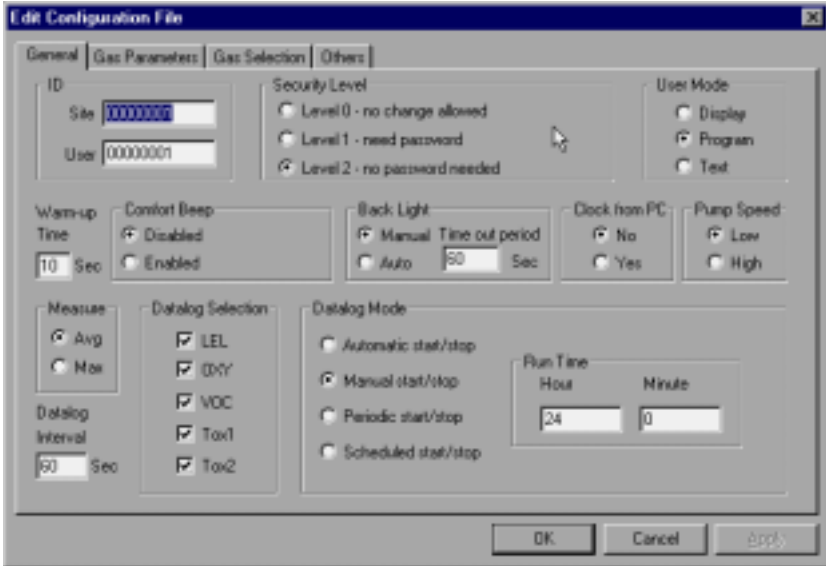


Figure 5-7 Edit Configuration File Dialog Box

The **Edit Configuration File** dialog box contains three tab pages: General, Gas Parameters and Gas Selection. To change a specific configuration setting, click the corresponding tab page header to bring that tab page to the front, then change the configuration setting on that tab page. When finished editing the configuration settings, click the **OK** button to close the **Edit Configuration File** dialog box. The new values of the configuration settings will be reflected in the client window.

Note: The VOC gas configuration settings applies only to monitors which are equipped with PID detector option.

The **General** tab page, which is shown in Figure 5-7, allows a user to change the general settings of the configuration data. The following is the description of each field in the **General** tab page of the **Edit Configuration File** dialog:

ID:

This section sets the identification that is used throughout the datalog process. Both editing fields, **Site** and **User**, can hold up to eight alphanumeric letters.

Security Level:

There are three levels of security. They are used to provide protection against unauthorized changes to monitor settings which can be changed by using the programming menu of the MultiRAE PLUS monitor when the instrument is in the programming mode.

Level 0 allows a user to enter the programming menu without password checking, but does not allow changes to alarm limits, real time clock, correction factor, or user and site information, etc. The user can still perform calibrations.

If **Level 1** is selected, a four digit password is required to enter the programming menu.

If **Level 2** is selected, the programming menu may be entered without restriction. Any changes made in the programming menu can be saved.

Password:

The four digit password must be entered if level 1 is selected as the security level or the monitor is in the **Text** mode. Entry to the programming menu requires that this password be entered.

User mode:

In the **Text** mode, the monitor only displays the sensor name and an **OK** message during normal operation. In the **Display** mode, the user can view several readings in the normal operation, but cannot enter the programming menu. In the **Program** mode, the user can enter the programming mode to calibrate the monitor or change various setup in the monitor.

Warm-up Time:

This option allows the user to choose the warm-up time of the instrument, in seconds.

Comfort Beep:

This option allows the user to specify a time interval that the buzzer will beep once to remind the user that the monitor is on. If zero is entered for the time interval, then the security beep feature is disabled.

Back Light:

This option allows the user to choose to turn on and off the LCD back light manually or automatically based on the ambient light sensor input. If **Manual** mode is selected, the user can also enter a time out period so that the back light will be turned off automatically after the time out period. If **Auto** is selected, the ambient light sensor will automatically turn on and off the backlight.

Clock from PC:

This option allows the PC clock to be downloaded to the MultiRAE PLUS monitor so that the user does not need to manually set the clock in the MultiRAE PLUS monitor.

Pump Speed:

This option allows the user to choose the high pump speed or low pump speed for the MultiRAE PLUS monitor.

Measure:

The user can choose to record the average or peak (Max) reading of all the sensors during each datalog period.

Datalog Interval:

The datalog interval is the rate at which datalog samples are recorded while the datalog is running. The unit of datalog interval is second. The datalog interval determines how often a new sample is calculated and stored to the datalog. The unit of a datalog interval is one second.

Datalog Selection:

The user can choose one or more sensors for datalogging purpose. This does not activate or inactivate the particular sensor's readings except for the purpose of datalogging recording.

Datalog Mode:

This may be set to either of four choices:

- With **Automatic start/stop**, the datalogging begins when the monitor is turned on and ends when it is turned off.
- With **Manual start/stop**, the datalog can begin by a series of key presses in the menu of normal operation. The maximum run time determines an automatic end to the datalog or it can be stopped manually.
- If **Periodic start /stop** (or daily) mode is chosen, the user must specify the start and stop hour and minute. The interval between start and stop is the period of time the monitor will datalog (at "data logging period" rate).
- With **Scheduled start/stop**, all the entry boxes for year, month, day, hour and minute for both start and stop time must be entered to specify when the datalog is to occur.

Run Time:

If manual start/stop mode for datalogging is chosen, the user needs to specify a maximum run time. After the monitor has been on for the specified run time, datalogging will be turned off automatically.

Start Time and Stop Time:

If scheduled start/stop mode is chosen for datalogging, all entry boxes must be completed for start and stop year, month, day, hour and minute. The monitor must already be

turned on. Then once the start date/time is reached, the monitor will start datalogging. When the stop date/time is reached, the datalogging will stop automatically. With periodic start/stop mode, the hours and minutes are used for the data log period to be run each day.

Figure 5-8 shows the **Gas Parameters** tab page which allows the user to change the gas parameters of the configuration data. The following is the description of each field in the **Gas Parameters** tab page of the **Edit Configuration File** dialog:



Figure 5-8 Gas Parameters Settings Tab Page
LEL Alarm Levels (%):
 This is the place where the user can specify the low alarm level (%) and high alarm level (%) for LEL sensor.

OXY Alarm Levels (%):

This is the place where the user can specify the low alarm level (%) and high alarm level (%) for OXY sensor.

VOC Alarm Levels (ppm):

This is the place where the user can specify the STEL alarm level (ppm), TWA alarm level (ppm), low alarm level (ppm) and high alarm level (ppm) for VOC sensor.

Tox1 Alarm Levels (ppm):

This is the place where the user can specify the STEL alarm level (ppm), TWA alarm level (ppm), low alarm level (ppm) and high alarm level (ppm) for Tox1 sensor.

Tox2 Alarm Levels (ppm):

This is the place where the user can specify the STEL alarm level (ppm), TWA alarm level (ppm), low alarm level (ppm) and high alarm level (ppm) for Tox2 sensor.

Alarm mode:

If **Auto** reset is chosen, the alarm will stop as soon as the alarm condition goes away. The alarm will remain on if the **Latched** option is chosen. To turn off a latched alarm, press [Y/+] key to acknowledge the alarm condition.

Power On Zero:

This option allows the monitor to perform a fresh air calibration automatically when the monitor is turned on. Care must be taken, when using this mode, to ensure that the monitor is in a fresh air environment when turned on.

Calibration span:

The user can specify the calibration gas span for LEL, OXY, VOC, Tox1 and Tox2 sensor here.

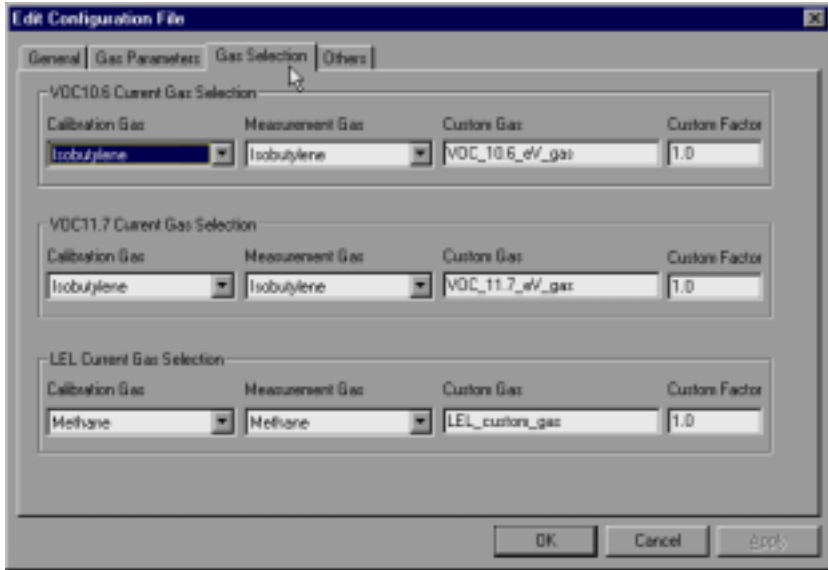


Figure 5-9 Gas Selection Settings Tab Page

Figure 5-9 shows the **Gas Selection** tab page. There are three sets of gases for correction factors that the user can choose: one for the LEL sensor, one for the PID sensor with 10.6 eV lamp and other one for the PID sensor with the 11.7 eV lamp. The following is the description of each field in the **Gas Selection** tab page of the **Edit Configuration File** dialog box:

VOC10.6 Current Gas selection:

This is the place where the user can choose a set of gases for the correction factors of the PID sensor with 10.6 eV. The user can choose one gas from the **Calibration Gas** list box for calibration and another gas from the **Measurement Gas** list box for measurement. Each list box contains a list of 20 to 40 gases. Scroll the list using the up or down arrow until the desired gas name is shown. Press **Enter** key to select the gas. The user can also enter a custom gas name (up to 16 characters long) and a custom correction factor.

VOC11.7 Current Gas selection:

This is the place where the user can choose a set of gases for correction factors of the PID sensor with 11.7 eV. The user can choose one gas from the **Calibration Gas** list box for calibration and another gas from the **Measurement Gas** list box for measurement. Each list box contains a list of 20 to 40 gases. Scroll the list using the up or down arrow until the desired gas name is shown. Press **Enter** key to select the gas. The user can also enter a custom gas name (up to 16 characters long) and a custom correction factor.

LEL Current Gas selection:

This is the place where the user can choose a set of gases for correction factors of the LEL sensor. The user can choose one gas from the **Calibration Gas** list box for calibration and another gas from the **Measurement Gas** list box for measurement. Each list box contains a list of 20 to 40 gases. Scroll the list using the up or down arrow until the desired gas name is shown. Press **Enter** key to

select the gas. The user can also enter a custom gas name (up to 16 characters long) and a custom correction factor.

In the **Others** tap, the user can put in a power-on-customized name. The name will be displayed when the unit is powered on. The user can also choose the supporting of the printer option.

OK/Cancel:

When the configuration changes are completed, click on the **OK** button to save the configuration and return to the client window. Click on **Cancel** button to abort the configuration changes.

5.5.2 Send Configuration to MultiRAE Plus

After the configuration data is loaded into the ProRAE-Suite software, the user can send the configuration settings to the MultiRAE PLUS monitor. To send the configuration settings to the instrument, click **Communication->Send Config** menu item or click the send toolbar icon (right arrow with “Send” letters), a message box will appear to remind the user to connect the instrument to the PC through the serial port. After making sure that the instrument is connected to the PC, click the **OK** button to start the data transfer.

After the configuration information is sent successfully, a message box will appear to indicate that the sending configuration process is completed. Click the **OK** button to close the message box.

If the communication is not successful, an error message indicating that there is no response from the instrument will appear. Check the cable to make sure that the connectors on both ends of the cable are securely seated in the sockets. Try to send the information again. If the error message still appears after repeated attempts, call an authorized service center for help.

5.5.3 Saving Configuration Data

In order to save the configuration information for future use, user can click **File->Save** or **File->Save As** menu item to save the opened configuration data to a file. Once the configuration file is saved on disk, it can be opened at a later time for further modification or can be sent to the MultiRAE monitor.

5.5.4 Configuring All Settings

A user can use this function to update the entire configuration settings (except the instrument ID, serial number and the datalog option) in the MultiRAE monitor. To configure all the settings in the instrument, click the **Option->Config All** menu item, and a message box will appear to remind the user to connect the instrument to the PC through the serial port. After making sure that the instrument is connected to the PC, click the **OK** button. Another message box will appear to warn the user that this operation will erase all the current configuration settings in the monitor. If the user does not want this to happen, click the **Cancel** button, otherwise click the **OK** button to start the data transfer.

After the information is sent successfully, a message box will appear to indicate that the sending configuration process is completed. Click the **OK** button to close the message box.

Warning: The **Config All** option is mainly used to restore the MultiRAE monitor's default operational settings when the configuration of the unit is non-recoverable and the unit is malfunctioning. Because the default parameters are not normally fit a specific unit, a user will need to re-calibration, re-setup lamp, pump, and LCD contrast threshold, etc. Try not to use this function if possible.

5.6 Processing the Logged Data

The ProRAE-Suite software allows the user to retrieve the logged data from the MultiRAE PLUS monitor and display the data in many different formats. The user can also export the displayed text to a tab delimited text file so that Microsoft Excel can read it directly.

5.6.1 Receive Data from MultiRAE PLUS

To receive the logged data from the MultiRAE Plus, click Communication->Receive Data menu item or click the Receive Data toolbar button (left arrow with “Recv” letters), a message box will appear to remind the user to connect the instrument to the PC through the serial port. After making sure the instrument is connected to the PC, click the OK button to start the data transfer. After the data transfer is finished, a new client window is opened with the newly received logged data displayed. In order to save the logged data for future use, the user can click File->Save or File->Save As menu item to save the newly received logged data to a file.

5.6.2 View Logged Data in Text Mode

Once the user opened a data file or received the logged data from the instrument, a data window appears, as shown in Figure 5-10.

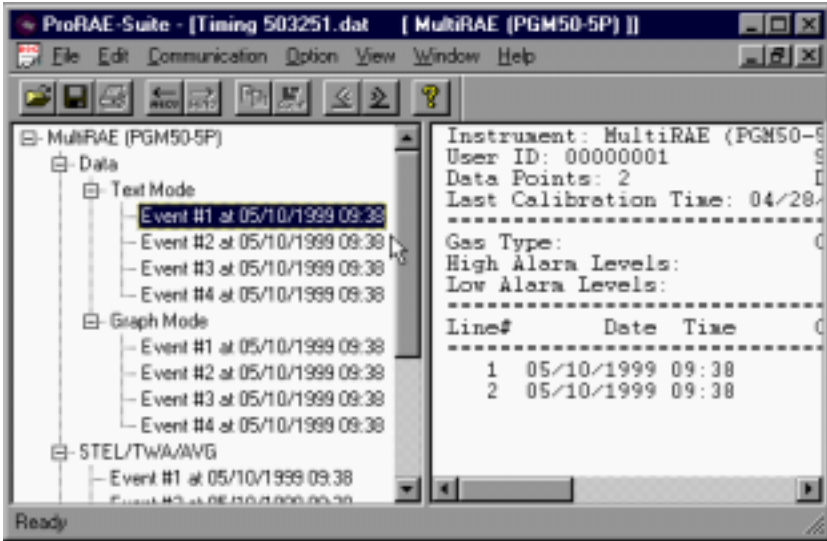


Figure 5-10 Display Logged Data

The data window is a two pane client window. The left pane is a tree view which lists all the display format of each event, and the right pane displays the information according to the display format and the event the user selected on the left pane. To select any display format of any event, the user can simply click the format item on the left pane. To view the next event or the previous event, the user can click the **Next Event** (double right arrow) or the **Previous Event** (double left arrow) toolbar buttons. The user can also drag the splitter bar between the left pane and

the right pane to the left or to the right to enlarge a pane if that pane is not big enough.

To view the data points of a specific event, the user can click the item representing that event under the item **Data\Text Mode**. For example, click the item **Event #1** on the left pane, the right pane displays the data points of Event #1, as shown in Figure 5-10.

5.6.3 View STEL/TWA/AVG Value

To view the STEL, TWA or AVG value of any event, click the event number item under the tree item **STEL/TWA/AVG** in the left pane, the right pane displays the STEL, TWA and AVG value of each data points of that event, as shown in Figure 5-11.

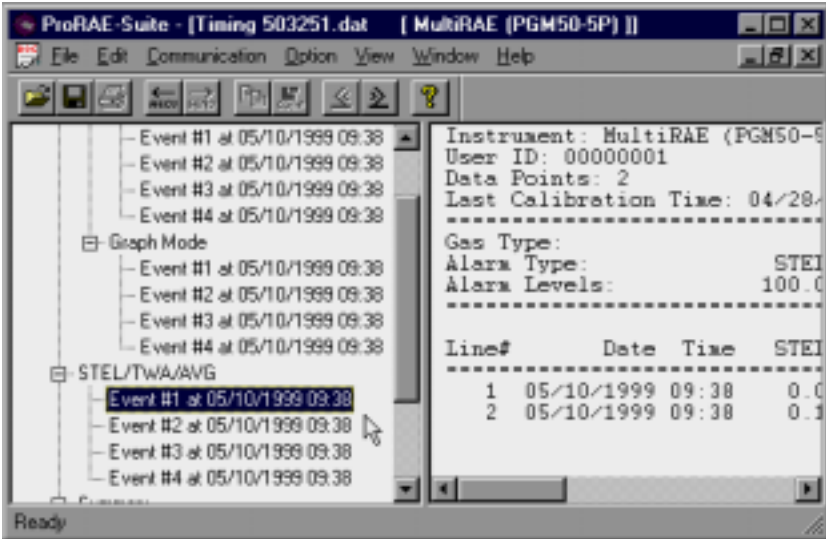


Figure 5-11 STEL/TWA/AVG of the Logged Data

5.6.4 View Summary Information

To view the summary information of any event, such as peak data value and minimum data value, click the event number item under the tree item **Summary** in the left pane, the right pane displays the summary information of that event, as shown in Figure 5-12.

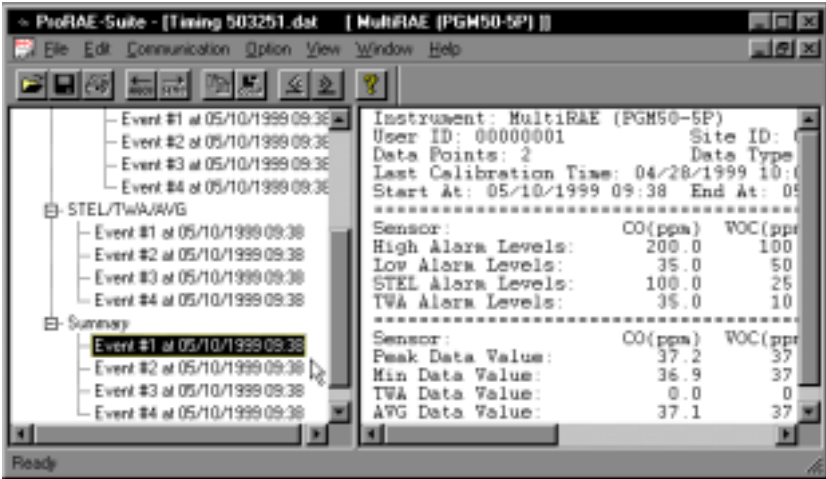


Figure 5-12 Summary Information of the Logged Data

5.6.5 View Logged Data in Graph Mode

To view the logged data of a specific event in graph mode, click the event item under the tree item Graph Mode in the left pane, and the right pane displays the graph of that event, as shown in Figure 5-13.

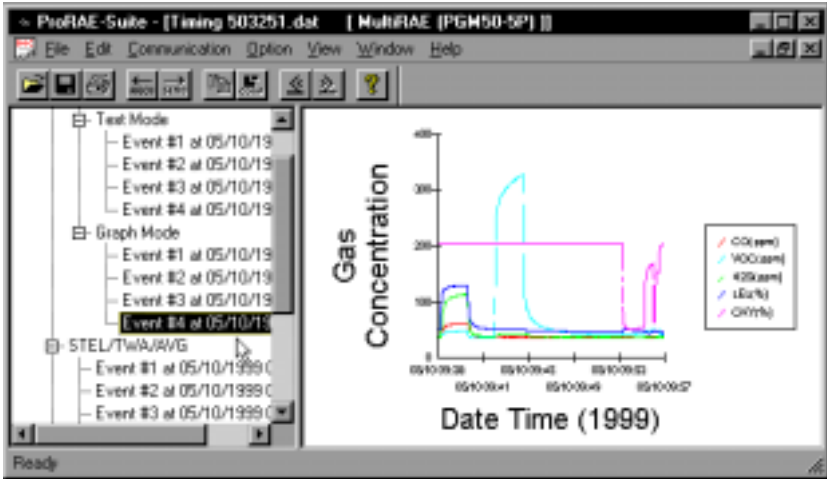


Figure 5-13 Graph of the Logged Data

Select graph type:

The user can choose the type of sensor data in the **Graph Type** tab page of the **Graph Settings** dialog box. To display the **Graph Settings** dialog box, click any place in the right pane so that pane has the focus, then click **Option->Graph Settings** menu item to display the **Graph Settings** dialog box. Figure 5-14 shows the **Graph Type** tab page of the **Graph Settings** dialog box. Here the user can choose which sensor data to be shown on the graph,

whether to show a grid on the right pane, and the title of the graph.

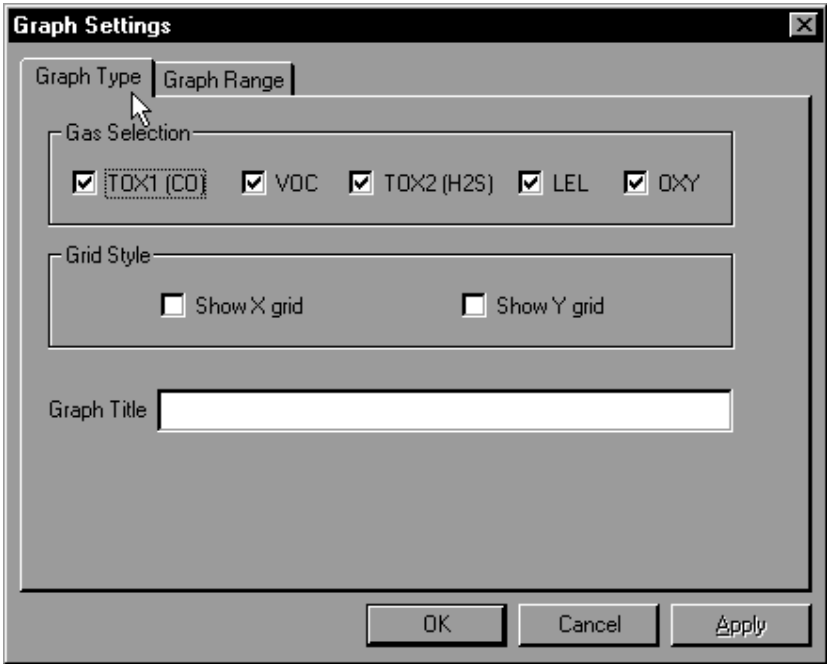


Figure 5-14 Graph Type Tab Page

Select graph range:

The user can choose the value range on the x-axis and y-axis in the **Graph Range** tab page of the **Graph Settings** dialog box. To display the **Graph Settings** dialog box, click any place in the right pane so that pane has the focus, then click **Option->Graph Settings** menu item to display the **Graph Settings** dialog box. To bring the **Graph Range** tab page, the user can simply click the page header of the **Graph Range** tab page. Figure 5-15 shows the **Graph Range** tab page of the **Graph Settings** dialog box.

This is the place where the user can choose the graph range on the x-axis and y-axis.

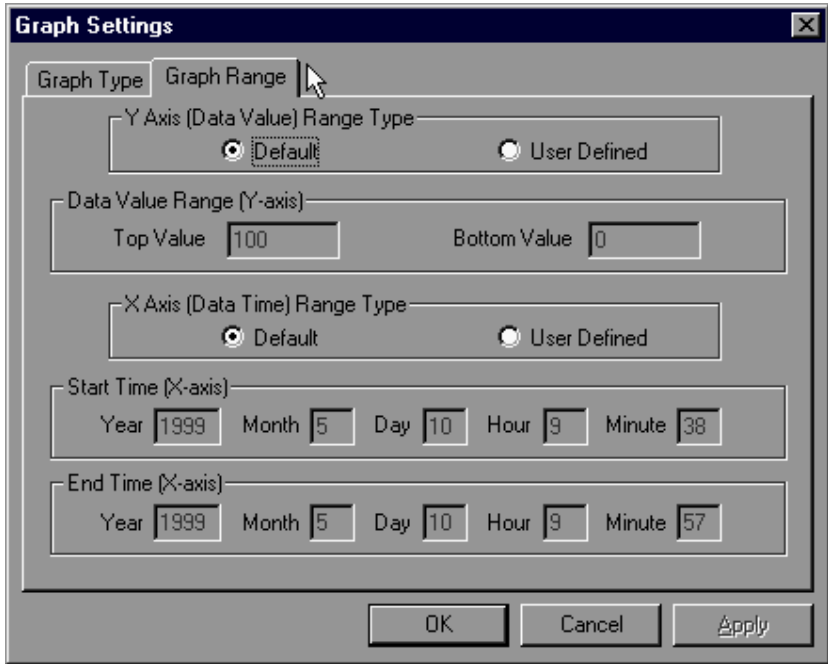


Figure 5-15 Graph Range Tab Page

To choose the range of Y-axis, the user first click the **User Defined** radio button in the **Y-Axis (Data Value) Range** group box, then the user can specify the top value and the bottom value in the **Data Value Range (Y-axis)** group box.

If the user select the **Default** radio button in the **Y-Axis (Data Value) Range** group box, the ProRAE-Suite software will scale the range of Y-axis by itself to cover the maximum data value on y-axis.

To choose the range of X-axis, the user first click the **User Defined** radio button in the **X-Axis (Data Time) Range** group box, then specify the start time fields in the **Start Time (X-axis)** group box and the end time fields in the **End Time (X-axis)** group box.

If the user select the **Default** radio button in the **X-Axis (Data Time) Range** group box, the ProRAE-Suite will scale the range of X-axis by itself to cover the every data points on x-axis.

5.6.6 Export the Displayed Data to a Text File

The ProRAE-Suite software allows the user to export the displayed text to a tab delimited text file so that it can be read by Microsoft Excel[®] directly. To export the text displayed in the right pane to a tab delimited text file, click **Option -> Export Text** menu item, a **Save As** dialog box is displayed. Specify the file name in the **File name** field, then click the **OK** button to close the **Save As** dialog box. A new file is created that can be read by Microsoft Excel[®] directly. Appendix C shows a detailed step by step instruction on how to export data as text file and use Microsoft Excel[®] to open the text file.

5.6.7 Export Graphics to a File

The ProRAE-Suite software allows the user to export the displayed graph to a windows bitmap (.bmp) file or a windows metafile (.wmf) file. To export the displayed graph in the right pane to a windows bitmap or metafile file, first click any place in the right pane to make sure that the graph pane has the focus, then click **Option -> Export Graph** menu item to display a **Save As** dialog box. Select the export graph file type (.bmp or .wmf) in the **Save as type** field, then specify the export file name in the **File name** field. Click **OK** button to close the **Save As** dialog box. The newly created graph file contains the graph displayed in the right pane.

5.6.8 Print the Logged Data

After viewing the data results, the user may print the data to a printer in order to obtain a hard copy of the text or graphic data report. First, click any place in the right pane to set the focus on that pane, then select **Print** function from the **File** sub-menu, or click the **Print** toolbar button (a printer) to print the graphic or text data.

A printer setup dialog box will appear before the printing starts so that the paper size, orientation, printer type, etc. can be configured correctly.

5.7 Upgrade the Datalog Option

To upgrade the datalog option, open the ProRAE-Suite software. Do not open any configuration file or data file so the ProRAE-Suite software has no client window open, as shown in Figure 5-16.

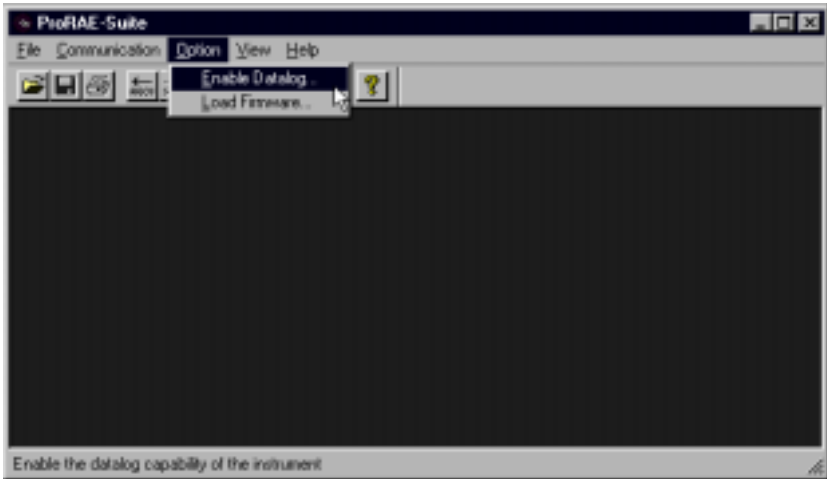


Figure 5-16 Main Window of ProRAE-Suite

Click **Option -> Enable Datalog** menu item, a message box will appear to remind the user to connect the instrument to the PC through the serial port. After making sure that the MultiRAE PLUS monitor is connected to the PC, click the **OK** button to start. After the ProRAE-Suite software made successful contact to the instrument connected to the PC, a dialog box is displayed, as shown on Figure 5-17.



Figure 5-17 Enable Datalog Dialog Box

Figure 5-17 shows that the instrument's datalog feature is currently enabled. If the user wants to change the datalog option, click another datalog option radio button, and type the three digit authorization code in the **Authorization Code** field, then click the **OK** button to close the dialog box. After the datalog option is changed, a message box will appear on the screen to let the user know that the datalog option is successfully changed.

Note: Each MultiRAE PLUS with datalogging function should be shipped with a 3 digit authorization code. If the code is missing, call the factory's Customer Service Department to obtain one.

5.8 Upgrade the Firmware

To upgrade the firmware in the MultiRAE PLUS monitor, open the ProRAE-Suite software. Do not open any configuration file or data file so the ProRAE-Suite software has no client window open, as shown in Figure 5-16. Click **Option -> Load Firmware** menu item, a message box will appear to remind the user to connect the instrument to the PC through the serial port. After making sure that the instrument is connected to the PC, click the **OK** button. After the ProRAE-Suite software made successful contact to the instrument connected to the PC, an **Open** file dialog box is displayed, as shown on Figure 5-18. Select the firmware file (.a07) which is going to be loaded into the instrument, click the **OK** button to start the loading process. After the firmware loading is finished, a message box will appear on the screen to let the user know that the firmware is successfully loaded into the instrument.

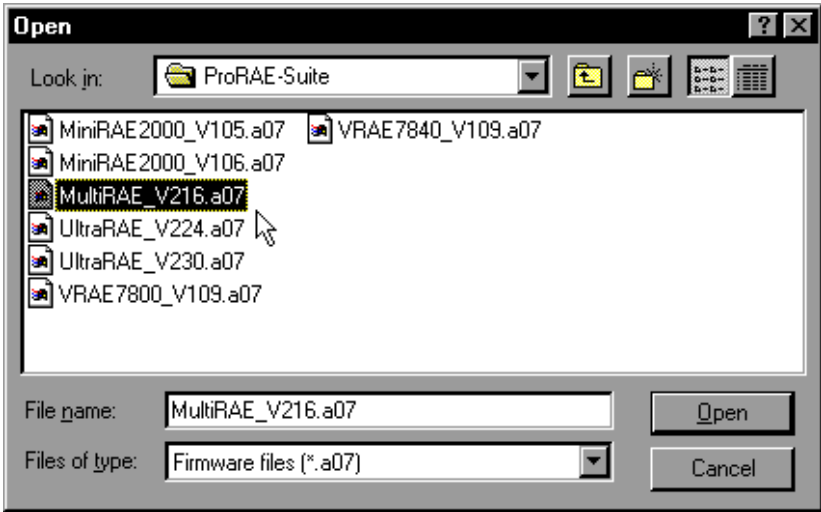


Figure 5-18 Open Firmware File Dialog Box

Note: In order to upgrade the firmware, the MultiRAE PLUS monitor must have a 2.04 or later version of the firmware. Call the factory's Customer Service Department, if the existing firmware version is older than 2.04 for instruction on how to upgrade the firmware.

6. THEORY OF OPERATION

The MultiRAE PLUS monitor uses one to five different sensors to measure a variety of gases. A newly developed electrodeless discharge UV lamp is used as the high energy photon source for the PID sensor (see Figure 6-1). The patented PID sensor will detect a broad range of organic vapors. Up to two electrochemical toxic gas sensors can be installed in the monitor to measure inorganic toxic gases. Many different types of toxic sensors are offered. They can be plugged into these two sensor sockets and are interchangeable. A catalytic bead sensor is used to measure combustible gases. An electrochemical sensor is used to measure oxygen.

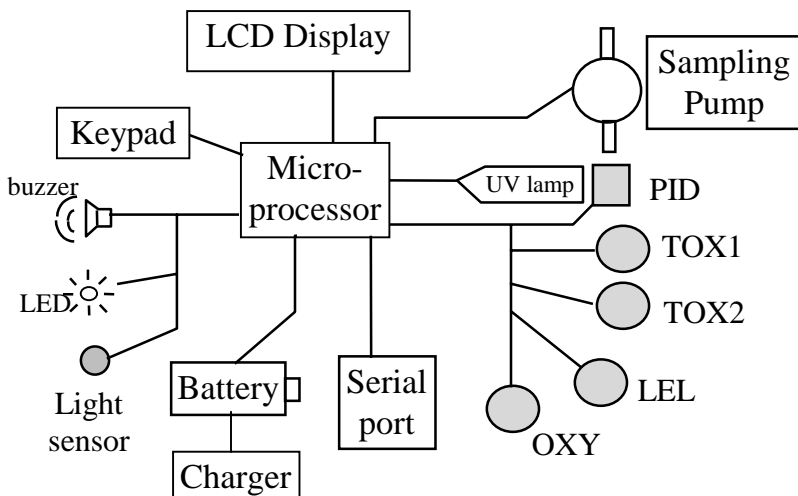


Figure 6-1 Block Diagram of MultiRAE PLUS Monitor

The PID sensor for this MultiRAE PLUS monitor is constructed as a small cavity in front of the UV lamp. The other sensors are mounted next to the PID sensor. A diaphragm pump is installed inside the monitor to draw the air sample into the sensor manifold and then distribute it to all sensors.

A single chip microcomputer is used to control the operation of the alarm buzzer, LED, pump and light sensor. It measures the sensor readings and calculates the gas concentrations based on calibration to known standard gases. The data are stored in non-volatile memory so that they can be sent to a PC for record keeping. RS-232 transceivers provide a serial interface between the monitor and the serial port of a PC. A 2-line by 16-character LCD display is used to show the readings. The user interacts with the monitor through three keys on the front panel keypad.

A rechargeable Li-ion or Ni-Cd battery or a set of four disposable AA alkaline batteries powers the monitor.

NOTE: The printed circuit board is connected to the battery pack even if the power is turned off. Therefore, it is very important to disconnect the battery pack before servicing or replacing sensors or any components inside the monitor. Severe damage to the printed circuit board may occur if the battery pack is not disconnected before servicing the unit.

7. MAINTENANCE

As shown in Figure 7-1, the major maintenance items of MultiRAE PLUS are:

- Battery pack
- Sensor modules
- PID lamp
- Sampling pump

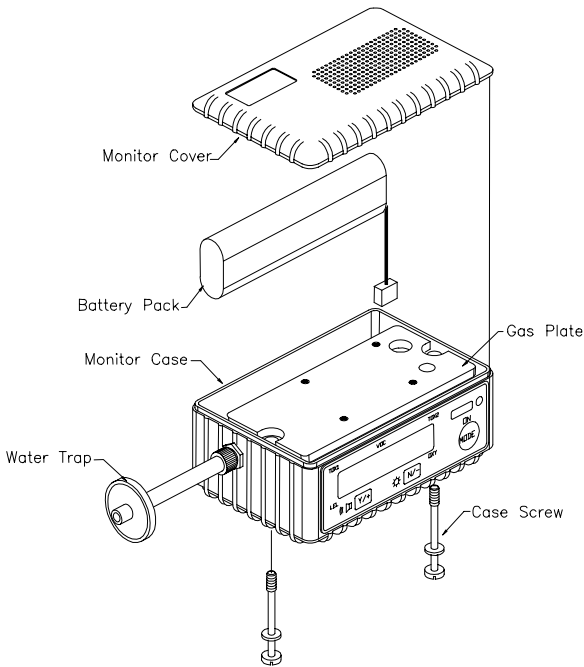


Figure 7-1 Main Components of MultiRAE PLUS

7.1 Battery Replacement

When the display shows a flashing message “Bat”, the battery requires recharging. The battery may be replaced in the field (in area known to be non-hazardous) if required. It is recommended to recharge the MultiRAE PLUS monitor upon returning from field work. A fully charged battery powers a MultiRAE PLUS monitor for 10 hours continuous operation. The charging time is less than 10 hours for a fully discharged battery. The built-in charging circuit is controlled by two-step constant voltage / constant current charging to prevent over-charging.

WARNING:

To reduce the risk of ignition of hazardous atmospheres, recharge battery only in area known to be non-hazardous. Remove and replace battery only in area known to be non-hazardous.

Replacing and Recharging Battery Pack

1. Turn off power of the **MultiRAE PLUS**.
2. Refer to Figure 7-1, unscrew the two captured case screws from the bottom of the monitor case and remove the **MultiRAE PLUS** cover.
3. Unplug the battery from the battery jack, which is connected to the PC board of the **MultiRAE PLUS**.
4. Connect the battery pack to the DC jack on an external charging station (optional) for charging.
5. Replace a fully charged spare battery pack in the **MultiRAE PLUS**.
6. Ensure the battery plug is securely connected to the **MultiRAE PLUS**.
7. Close the **MultiRAE PLUS** cover and tighten the screws.

Replacing Alkaline Battery Adapter

1. Insert four fresh AA size alkaline batteries into the alkaline battery adapter. Make sure that the polarity of the battery is correct.
2. Follow the same procedure as described above to replace the battery adapter.

Note: The internal charging circuit is designed to prevent charging to alkaline batteries when alkaline batteries are installed inside the monitor.

7.2 Sensor Replacement

The toxic, combustible and oxygen sensors all have limited expected operating lives. Under normal operating condition, most sensors will lose their original sensitivity after the expected operating life and will need to be replaced.

Each sensor module in MultiRAE PLUS includes a non-volatile memory, which records the manufacturing date of the sensor. In the diagnostic mode, the microprocessor will check the date code and display the expiration date of each sensor. It is suggested that the user should replace the sensor when the current date exceeds the expiration date of a sensor.

Sensor Replacement Procedure

The oxygen and combustible sensor each has their unique sensor sockets in the MultiRAE PLUS monitor. The two toxic sensor sockets in the MultiRAE PLUS monitor allow users to plug in any two sensors selected from the series of toxic sensors offered by RAE Systems Inc.

1. Turn off power of the MultiRAE PLUS.
2. Refer to Figure 7-1, open the monitor cover by unscrewing the two captured screws from the bottom of the monitor case. **Disconnect the battery pack.**

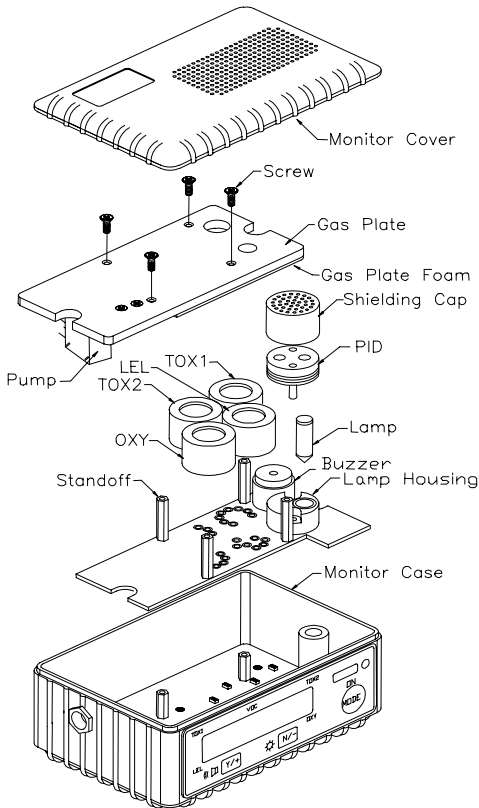


Figure 7-2 Sensor Assembly of MultiRAE PLUS

3. Refer to Figure 7-2, carefully unscrew four No. 2 screws that hold down the gas piping plate to the analog PCB and sensors. Remove the gas piping plate.
4. Refer to Figure 7-2, identify the location of a specific toxic sensor and remove the sensor by gently pulling the sensor upward.

5. Plug a new sensor into the empty sensor socket. Make sure that black line on the sensor label is lined up with the white marker on the PCB and the sensor pins are aligned with the socket before pushing down the sensor.
6. Replace the gas piping plate and tighten the four screws to hold down the sensors. Re-connect the battery pack. Replace the monitor cover.
7. Turn on the power of the MultiRAE PLUS. The microprocessor will automatically recognize the sensors installed and configure the monitor accordingly.

Special Bias Voltage for Toxic Sensors:

The NO and NH₃ toxic sensors require a special 300 mV bias voltage to operate. Only the Tox1 sensor position provides such a special bias voltage. Therefore, **the NO or NH₃ toxic sensor must be plugged into the Tox1 sensor socket in MultiRAE PLUS.** In addition, there is a dip switch or pin jumper located on the analog PCB next to the PID sensor. When biased toxic sensor is plugged into the Tox1 position, it is necessary to turn the dip switch or move the jumper to the “ON” position to enable the bias voltage. During power on sequence, the microprocessor will check the sensor ID and the bias voltage. If the NO or NH₃ sensor is plugged into the wrong toxic sensor socket or the bias voltage is not switched on, an error message will be displayed.

7.3 PID Sensor Cleaning / Replacement

This section only applies to a monitor that is equipped with the PID detector option. During the course of normal operation, a film of gas vapor may build up inside the PID sensor module and the UV lamp. The rate at which the film develops depends on the type and concentration of the vapors being sampled. As a guide, it is recommended to clean the PID sensor module and lamp only when the PID is malfunctioning.

The sensor module is made of several components and is attached to the lamp housing unit as shown in Figure 7-2.

If the lamp does not turn on, the monitor will display an error message of “Lamp” to indicate cleaning or replacing of the lamp is required. Periodic cleaning of the lamp window will also remove film deposits and restore lamp sensitivity. **Care must be exercised when cleaning the window surface so that it will not be damaged.**

1. Turn off power of Multi-gas Monitor.
2. Refer to Figure 7-1, open the monitor cover by unscrewing the two case screws from the bottom of the monitor case. **Disconnect the battery pack.**
3. Refer to Figure 7-2, carefully unscrew four No. 2 screws that hold down the gas piping plate to the analog PCB and sensors. Remove the gas piping plate.

4. Remove the shielding cap for the PID sensor. Gently pull out the PID sensor. Note the sensor is made of Teflon and stainless steel material.
5. Dip the entire PID sensor into GC grade methanol. It is highly recommended that an ultrasound bath to be used to clean the sensor for at least 3 minutes. Then dry the sensor thoroughly.
6. If the lamp is operational, use a cotton swab to clean the flat window surface with GC grade methanol. If the lamp does not turn on remove the UV lamp.
7. Install a new lamp, avoiding contact with the flat window surface.
8. Reinstall the PID sensor. Install the shielding cap.
9. Refer to Figure 7-2, install the gas piping plate and tighten the four screws to hold down the sensors. Reconnect the battery pack. Install the monitor cover.

7.4 PID Lamp Care

The UV lamp is made of a glass envelope and a UV window on one end of the envelope. The inside of the lamp is filled with low pressure gases. To turn on the lamp, a high voltage electric field is applied from the outside of the glass envelope. The molecules inside the lamp are ionized and produce a glow discharge to generate the UV light. Because this UV lamp does not have an electrode inside the glass envelope, it requires only a small amount of ions inside the lamp to initiate the glow discharge process.

If the UV lamp has not been used for a long period of time (> 1 month), it may be slightly harder to turn on. If such a condition occurs, an error message “Lamp” will appear in the monitor display during the power on sequence. This phenomenon is more significant in 0.25” UV lamps used in MultiRAE Plus products, because of the relatively small lamp size.

To solve this problem, simply turn on and off the monitor a few times and the lamp should turn on. Gently shaking the monitor will also help to initiate the glow discharge process. After the UV lamp is turned on for the first time, it should be easier to turn on the UV lamp next time.

The MultiRAE Plus has a built-in sensing mechanism to monitor the status of the UV lamp. If the UV lamp is not on, the error message “Lamp” will be displayed. It is possible that the UV lamp is actually on when the lamp error message appears. When the UV lamp becomes old, changed, or the configuration file inside the MultiRAE has been totally over-written, the threshold level to determine lamp failure may be wrong and cause a false alarm. To eliminate such a possibility, simply apply some VOC by putting a felt-tip marker close to the inlet of the MultiRAE and see if the VOC raw count goes up. If the UV lamp is on while the error message persists, then it is necessary to adjust the lamp threshold. Please refer to Chapter 8 on adjusting the threshold level for the UV lamp.

If chemical liquid or dust has been sucked into the unit, clean the lamp window surface by wiping it with anhydrous methanol using a cotton swab. Rub in a circular motion at moderate pressure. After cleaning, hold the lamp up to the light at an angle to detect any remaining film. Repeat the process until the lamp window is clean.

Never touch the window surface with fingers or anything that may leave a film.

(CAUTION: Water will degrade window surfaces, especially the 11.7 eV lamp window)

7.5 Sampling Pump Replacement

The sampling pump is positive displacement piston pump. When approaching the end of the specified life time of the pump, it will consume higher amount of energy and reduce its sample draw capability significantly. When this occurs, it is necessary to replace the pump.

1. Turn off power of Multi-gas Monitor.
2. Refer to Figure 7-2, open the monitor cover, **disconnect the battery pack**, carefully unscrew four No. 2 screws that hold down the gas piping plate to the analog PCB and sensors. Remove the gas piping plate.
3. Carefully loosen the connector. Unscrew the two screws that hold the pump assembly to the gas plate. (For older model, use a soldering iron to de-solder the two wires that connect the pump to the PCB. Unscrew the two screws that holding the pump to the PCB.) Disconnect the Tygon tubing that connects the pump to the gas inlet port.
4. Replace a new pump assembly. Connect the Tygon tubing to the gas inlet port. Solder the pump wire and screw down the pump assembly to the analog PCB.
5. Refer to Figure. 7-2, replace the gas piping plate and tighten the four screws to hold down the sensors. Re-connect the battery pack. Replace the monitor cover.

8. TROUBLESHOOTING

To aid the user in diagnosing the monitor, the monitor has a special diagnostic mode that can display critical, low level parameters. Section 8.1 describes the operation of the diagnostic mode. Section 8.2 summarizes the frequently encountered problems and suggested solutions. Turning on the **MultiRAE PLUS** monitor in diagnostic mode and using the troubleshooting table in Section 8.2, the user can usually narrow the problem down to one or two areas and correct the problem without having to return the monitor for repair.

WARNING: The diagnostic mode allows the user to set several low level parameters which are very critical to the operation of the monitor. Extra care should be taken when setting these low level parameters. If the user are not familiar with these parameters and set them incorrectly, it may cause the monitor to shut down or malfunction. The diagnostic mode should be used by qualified personnel only.

8.1 Special Diagnostic Mode

To place the monitor into the special diagnostic mode, first turn the monitor off. Next push and hold the **[Y/+]** key, while still holding the **[Y/+]** key, also push and hold the **[MODE]** key for at least two seconds. After the required delay, release both keys, the monitor will now go through the normal start-up display sequence and display a “Diagnostic mode” message. At the end of the special mode start-up, the display will show 1 to 5 numbers with a message “Raw.” These numbers are raw sensor readings without calibration.

Other critical parameters of the monitor are available as shown in Table 8.1. They can be reached by pressing the **[MODE]** key repeatedly until the desired parameters are displayed.

Table 8.1

Key Action	Display
	Show raw readings
[MODE]	Show sensor name
[MODE]	Adjust PID lamp failure threshold
[MODE]	Show battery type and Tox1 bias
[MODE]	Show x1 and x10 range of PID sensor
[MODE]	Adjust LCD contrast
[MODE]	Check LEL power on/off
[MODE]	Show clock, battery voltage and temperature
[MODE]	Show LEL & OXY sensor expiration date
[MODE]	Show TOX1 & TOX2 sensor expiration date
[MODE]	Adjust pump stall threshold
[MODE]	Adjust back light on/off threshold
[MODE]	Show serial number and toggle pump speed
[MODE]	Begin battery deep discharge
[MODE]	Show battery duration time
[MODE]	Communicate with PC?

Note: The 3rd and 5th display only apply to the monitor which is equipped with PID detector option.

Here is a brief description of each diagnostic display and how to interpret the displayed values:

1) Raw Sensor Readings

The raw sensor readings provide a quick diagnose on the response and the sensitivity of each sensor. When zero gas (fresh clean air) is applied to the monitor, the raw sensor readings typically should be between 200 to 700 for toxic and VOC sensors, between 100 to 1300 for LEL sensor and between 1200 to 2300 for oxygen sensor. If the raw reading is outside these ranges when zero gas is applied, the sensor or the electronics may be defective.

When a specific gas is applied to the monitor, the corresponding sensor should respond and the raw reading should increase or decrease. If the reading of the corresponding sensor does not change when the specific gas is applied, then the sensor may be defective.

TOX1	VOC	TOX2
365	360	373
530	RAW	1879
LEL		OXY

2) Sensor Name

All the toxic, oxygen and LEL sensors have a non-volatile memory which contains the sensor identification and other vital information, such as manufacturing date, expected operating life, etc. If a sensor is programmed and installed properly in the monitor, the sensor name should be displayed. If the sensor name does not show up in the display, then the sensor may not be programmed properly or may be defective.

3) Adjust Lamp Failure Threshold

This diagnostic menu only applies to the monitor which is equipped with a PID detector option. This display can be used to calibrate the PID lamp failure threshold. If the lamp appears to be good but in normal operation a lamp failure message (i.e. “Lamp”) is displayed, the lamp failure level may be set too high. This level can be adjusted by using the following steps:

1. Turn the monitor off.
2. Remove the UV lamp of the PID sensor, then replace the sensor and cover.
3. Turn on the monitor in the special diagnostic mode.
4. Press the **[MODE]** key until “Lamp = xxx, Fail = yyy +/-” is display. The reading “xxx” is the lamp current reading when the lamp is off. The value “yyy” is the threshold value which determines when does the lamp fail.
5. Push the **[Y/+]** or **[N/-]** key to increase or decrease the threshold value “yyy” until it is about 10 counts above the “xxx” value. This will optimally set the lamp failure threshold. Press **[MODE]** key to exit this display. If the threshold value is changed, a message “Save new lamp threshold?” will appear. Press **[Y/+]** to confirm the change, **[N/-]** or **[MODE]** key to abandon the changes.
6. Turn the monitor off and replace the lamp.
7. Turn on the monitor in diagnostic mode again and press the **[MODE]** key until “Lamp = xxx, Fail = yyy +/-” is display. This time, the reading “xxx” is the lamp current reading when the lamp is on and it should be higher than the threshold value “yyy” by at least 15-20

counts. If not, the lamp may be defective or very weak. In most cases lamp failure threshold adjust is not required, in which case the user should press **[MODE]** key to exit this display.

4) Battery Type and Bias Display

For some toxic sensors (such as nitric oxide or ammonia sensor), a bias voltage of a few hundred millivolts is required for the sensor to function properly. In the MultiRAE PLUS monitor, the user needs to manually switch on the bias voltage supply located on the analog PCB (see Section 7.2 for details). This may alternately be a jumper, where the jumper position should follow the board marking – On or Off. For this test to work, a nitric oxide or ammonia sensor has to be installed in the toxic #1 socket. If the bias voltage is switched to ON position, the bias reading should be below 182, otherwise the bias supply may be defective.

The MultiRAE PLUS monitor can be powered by either a rechargeable Ni-Cd battery pack or an alkaline battery adapter. This display also shows the type of battery which is installed inside the monitor.

5) Show x1 and x10 Range of PID Sensor

This diagnostic menu only applies to the monitor which is equipped with a PID detector option. The PID sensor output is connected to two amplifiers with two different gains: Unity gain and gain of ten. Raw outputs of both amplifiers are displayed. When zero gas is applied, both amplifier output should be between 200 to 500. When a VOC gas is applied, both amplifier output should increase

and the amount of increase for the unity gain (x1) amplifier should be about 1/10 of the increase for the gain of ten (x10) amplifier. If the increase does not agree with expected value, then the gain switch of the amplifier may be defective.

6) Adjust LCD Contrast

This display allows the user to adjust the LCD contrast. Press [Y/+] to increase the contrast and [N/-] key to decrease the contrast. The bar graph shows the current LCD contrast setting. If the display appears having dark lines, press [Y/-] key several times should see a more clear display.

7) Check LEL Power ON/OFF

This display shows the present condition of the LEL sensor power and raw reading. The top display shows the instantaneous reading of raw counts from the LEL sensor. The bottom line shows if the LEL sensor is powered. By pressing [N/-] key the power can be turned off. The [Y/+] key turns powers to the LEL on.

8) Show Clock, Battery, and Temperature

This display shows the real time clock, battery voltage in raw count and temperature sensor reading.

9) Sensor Expiration Date

This display shows the expiration date (month and year) of all the installed sensors in the **MultiRAE PLUS** monitor. The expiration date is calculated based on the manufacturing date and expected life of each sensor which were stored inside each sensor when it was fabricated in the factory. If the current date exceeds the expiration date

of any sensor, the performance of the given sensor can no longer be guaranteed. It is strongly recommended that the user replace the sensor immediately to ensure proper operation of the sensor.

10) Adjust Pump Stall Threshold

This display can be used to calibrate the pump stall threshold. If the gas inlet is blocked but the pump does not shut down, or the pump shut down too easily with a slight blockage to the gas inlet, then the pump stall threshold value may be set too high or too low. Use the following steps to adjust the pump stall threshold.

1. The maximum and average pump current is displayed on the first row: "Pump = xxx/zzz." The current pump stall value is displayed on the second row: "Stall = yyy +/-." The typical maximum pump current without any blockage should be between 20 – 35 when the speed is set to be "low" and the water trap filter is installed. The typical stall value should be higher than the "un-blocked" pump current by at least 5-8 counts.
2. The user can block the gas inlet for about ten seconds and watch the pump current reading. The stall threshold should set to be the average of the idle reading and the block reading. That is: $\text{Stall} = (\text{Idle} + \text{Block}) / 2$. The readings to be used in the calculation are maximum pump current readings at the "xxx" location of the unit.
3. Use [Y/+] or [N/-] key to increase or decrease the stall value until it is the average of the idle reading and the block reading. Press [MODE] key to exit this display. If the threshold value is changed, a message "Save new

stall threshold?” will appear. Press [Y/+] to confirm the change, [N/-] or [MODE] key to abandon the changes.

4. The pump stall threshold should be re-adjusted if the pump speed is switched to “low” or “high,” or water trap filter changed, or the firmware configuration has been totally refreshed.

11) Check Back Light Threshold

This display can be used to adjust the LCD back light turn on and off threshold. Verify that the threshold is 100 which will fit almost all of the situation.

12) Serial Number and Pump Toggle

This display shows the unit’s serial number. If a pump is installed and pump speed control circuit available, the display “Pump=Low/(High)” may be toggled by pressing the [N/-] key. Note that changes made here are only for testing the pump condition and do not become saved in the nonvolatile memory (see Section 4.7 to update the pump speed setting).

13) Display Battery Duration Time

This display shows the run time of the last time the unit powered itself off due to a low battery. It is useful for battery life testing.

14) Communicate with PC?

This display give the option of communicate with the PC for upload or download activity.

8.2 Troubleshooting Table

Table 8.2

Problem	Possible Reasons & Solutions
Cannot turn on power after charging the battery	<p>Reasons: Discharged battery. Defective battery. Microcomputer hang-up.</p> <p>Solutions: Charge or replace battery. Disconnect then connect battery to reset computer.</p>
No LED or LCD back light	<p>Reasons: Defective LED or LCD back light.</p> <p>Solutions: Call authorized service center.</p>
Lost password	<p>Solutions: Ask the service center for help.</p>
Buzzer inoperative	<p>Reasons: Bad buzzer.</p> <p>Solutions: Call authorized service center.</p>

TROUBLESHOOTING

Problem	Possible Reasons & Solutions
Reading abnormally high	<p>Reasons: Wrong calibration data. Dirty sensor module. Dirty water trap filter. Excessive moisture and water condensation.</p> <p>Solutions: Re-calibrate with the gas. Clean sensor module. Replace water trap filter. Blow dry the sensor module.</p>
“Lamp” message during operation	<p>Reasons: Wrong threshold. Dirty PID sensor. Weak or defective PID lamp.</p> <p>Solutions: Adjust the lamp threshold. Clean PID sensor. Replace PID lamp.</p>
Reading abnormally low	<p>Reasons: Incorrect calibration. Low sensitivity to the specific gas.</p> <p>Solutions: Calibrate the monitor. Replace sensor.</p>

TROUBLESHOOTING

Problem	Possible Reasons & Solutions
<p>Read a small background value when there is no detectable gas.</p>	<p>Reasons: Sensor zero drifted. The unit was out of battery power connection or the sensor just plugged in.</p> <p>Solutions: Do fresh air calibration (see Section 4.4.1) Wait for reading to stabilized.</p>
<p>Reading jumping around randomly</p>	<p>Reasons: Incorrect gas calibration. Low sensitivity to cal gas.</p> <p>Solutions: Calibrate the sensor. Use different cal gas.</p>
<p>Cannot turn off monitor or corrupted characters in LCD display</p>	<p>Reasons: Microprocessor hang-up.</p> <p>Solutions: Disconnect and re-connect battery to reset computer. Call authorized service center.</p>
<p>Calibration error message</p>	<p>Reasons: No standard gas input.</p> <p>Solutions: Make sure standard gas flows into monitor.</p>

TROUBLESHOOTING

Problem	Possible Reasons & Solutions
“Bat” message in operation	<p>Reasons: Discharged battery.</p> <p>Solutions: Recharge battery.</p>
“Voltage too high message” in charge mode	<p>Reasons: Battery fuse blown or wrong. AC adapter or AC adapter does not fully plug in.</p> <p>Solutions: Check battery and adapter. Detach and plug in the adapter again.</p>
Full scale measurement in humid environment	<p>Reasons: Dirty or wet sensor.</p> <p>Solutions: Clean and dry sensor. Replace water trap filter.</p>
VOC Measurement max out at certain level	<p>Reasons: Dirty PID sensor module. Weak PID lamp.</p> <p>Solutions: Clean lamp / sensor module. Replace new lamp. Replace filter.</p>
Excessive pump noise or no inlet air vacuum	<p>Reasons: Leaky inlet path. Defective pump.</p> <p>Solutions: Check inlet connection. Replace a new pump.</p>

APPENDIX A. QUICK REFERENCE GUIDE

DISPLAY MODE

Display Instantaneous Readings

[N]+[MODE] for 3 seconds:
 Security level=0 or Display Mode: No Action
 Security level=1 or Text Mode: Password check
 Wrong password: Back to instantaneous display
 Correct password: Enter Programming menu.
 [N]: Toggle back light [Y]: Test alarm/stop alarm

[M]

Display Sensor names

[M]

Display Peak values

[M]

Display Minimum values

[M]

Display STEL values

[M]

Display TWA values

[M]

Display Battery voltage

[M]

Display Clock / Run time / Internal temperature

[M]

Configured for Manual datalog?

yes: Start/Stop Datalog?
 [Y]: Start or Stop Datalog
 [M]: Go to "Display LEL gas name"
 no: Display Datalog mode

[M]

Display LEL gas name (if sensor is present)

[M]

Display VOC gas name (if sensor is present)

[M]

Communicate with PC?

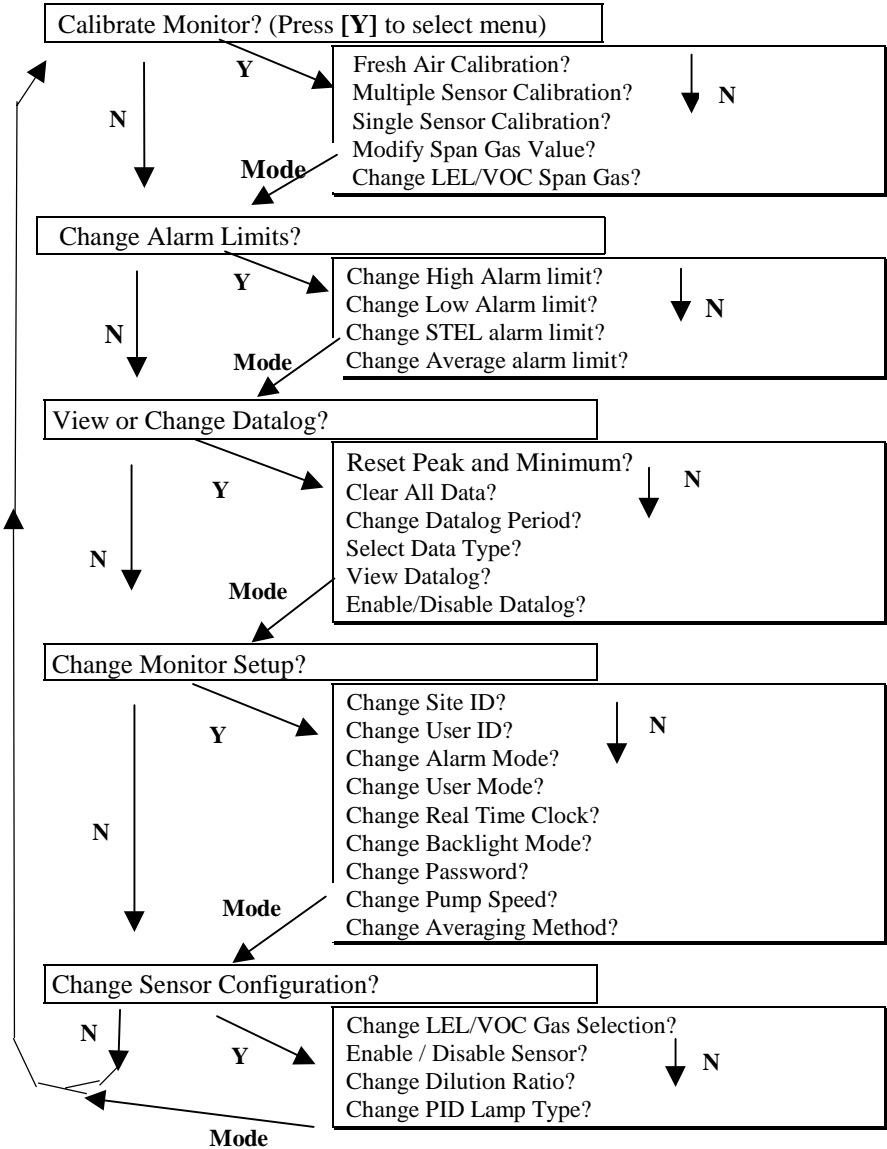
[Y]: Monitor will pause OK?
 [Y]: Ready...
 [N]: Return to Instantaneous display

[M] or [N]

Return to Instantaneous display

PROGRAMMING MODE

Press **[N]** and **[MODE]** together for 3 seconds to enter, **[Mode]** to return



APPENDIX B. CORRECTION FACTORS

A partial list of correction factors for a number of commonly used compounds for the LEL sensor, 10.6 eV and 11.7 eV PID sensors is as follows (refer to TN-106 and TN-156 at www.raesystems.com for complete lists of correction factors):

Table B.1
Correction Factors for PID & LEL Sensors

Compound	10.6	11.7	LEL
Acetaldehyde	5.5	3.3	1.8
Acetic acid	22	2.6	3.4
Acetone	1.1	1.4	2.6
Acrylic acid	12	2.0	
Acrylonitrile	NR*	1.2	
Allyl alcohol	2.4	1.7	
Ammonia	9.7	5.7	0.79
Benzene	0.53	0.6	2.1
Butadiene	0.85		2.5
Butane, n-	67		2.0
Butyl acetate, n-	2.6		
Butyl acrylate, n-	1.6	0.6	
Carbon disulfide	1.2		4
Carbon monoxide	NR	NR	1.2
Chlorine	NR	1.0	
Cyclohexane	1.4	0.64	2.5
Cyclohexanone	0.9	0.7	
Dichloroethane, 1,2-	NR	0.6	
Dichloroethene, t-1,2-	0.45	0.34	
Dichloromethane	NR	0.9	1.0

APPENDIX B

Compound	10.6	11.7	LEL
Diesel Fuel	0.7	0.4	
Diethylamine	0.97		
Dimethylhydrazine, 1,1-	0.78	0.83	
Epichlorohydrin	0.85	1.4	
Ethanol	12		1.7
Ethene	10		1.5
Ethyl acetate	4.6		2.2
Ethyl acrylate	2.4	1.0	
Ethyl benzene	0.52	0.51	2.8
Ethyl ether	1.1		2.3
Ethyl hexyl acrylate, 2-	1.1	0.48	
Ethyl sulfide	0.51		
Gasoline vapors	0.85		
Gasoline, whole	1.0	0.47	2.1
Heptane, n-	2.8	0.6	2.4
Hexamethyldisilazane	0.24	0.19	
Hexane, n-	4.3	0.54	2.3
Hydrazine	2.6	2.1	
Hydrogen	NR	NR	1.2
Hydrogen sulfide	3.3	1.5	2.3
Isobutane	100	1.2	1.8
Isobutene	1.00	1.00	1.7
Isobutyl acrylate	1.5	0.60	
Isopropanol	6.0		1.6
Jet fuel JP-4	1.0	0.42	
Jet fuel JP-5	0.6	0.46	
Jet fuel JP-8	0.6	0.32	
Methane	NR	NR	1.0
Methanol	NR	2.5	1.5
Methyl acrylate	3.7	1.2	
Methyl ethyl ketone	0.86	1.1	1.7
Methyl isobutyl ketone	0.80	0.60	

APPENDIX B

Compound	10.6	11.7	LEL
Methyl methacrylate	1.5	1.2	
Methyl t-butyl ether	0.91		
Nitric oxide	5.2	2.8	
Octane, n-	1.8		2.9
Pentane	~80	8.4	1.8
Perchloroethene	0.57	0.31	
Pinene, a-	0.31	0.47	
Pinene, b-	0.37	0.37	
Propane	NR	1.6	1.5
Propene	1.4	1.6	1.5
Styrene	0.40	0.4	
Tetrahydrofuran	1.7	1.0	
Toluene	0.50	0.51	1.9
Trichloroethane, 1,1,1-	NR	0.98	
Trichloroethene	0.54	0.43	
Vinyl chloride	2.0	0.64	1.8
Xylene, m-	0.43	0.40	2.7
Xylene, o-	0.59	0.69	3.0
Xylene, p-	0.45	0.62	2.8

* NR = No Response. Blank space = no data

For more data see Technical Notes 106 (PID) and 156 (LEL)

The VOC correction factors in Table B.1 are measured relative to isobutylene gas and LEL correction factors are measured relative to methane gas. All measurements are at <5% relative humidity and 25°C, typically at 50-100 ppm for VOC and 20-80% LEL for LEL. The factors may change at higher concentration or different temperature and humidity conditions. The factors are to be multiplied by the reading to obtain the actual concentration or % LEL of the gas. If the correction factor of a gas is <1.0, then the sensitivity to the gas is higher than that of isobutylene (VOC) or methane (LEL).

APPENDIX C. MULTIRAE PLUS DATA CONVERSION TO MICROSOFT EXCEL®

The MultiRAE PLUS multi-gas monitor has a built-in 20,000 point datalogger that in conjunction with the ProRAE-Suite software will provide data that can be converted into other application program such as Microsoft Excel® (Version 7.0) for further data manipulation or graphing.

To convert the data file into Excel®, and to facilitate easier data manipulation, the follow these procedures:

1. Export the event data to a tab delimited text file, as described in Section 5.6.6: **Export the displayed data to a text file**. Assume we have just export the event data to a file called TextEvent.txt in C:. To convert that file to a MS-Excel file, open the MS-Excel software, as shown in Figure C-1.

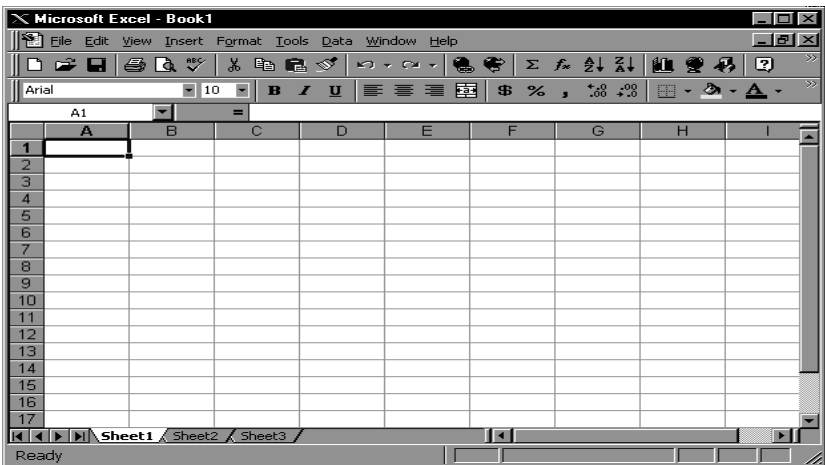


Figure C-1 Excel Window

- Click **File->Open** menu item to open the **Open** dialog box, select the folder where the file TextEvent.txt is resided, and select the **Files of type** as Text Files. Click to select the file TextEvent.txt, as shown in Figure C-2.

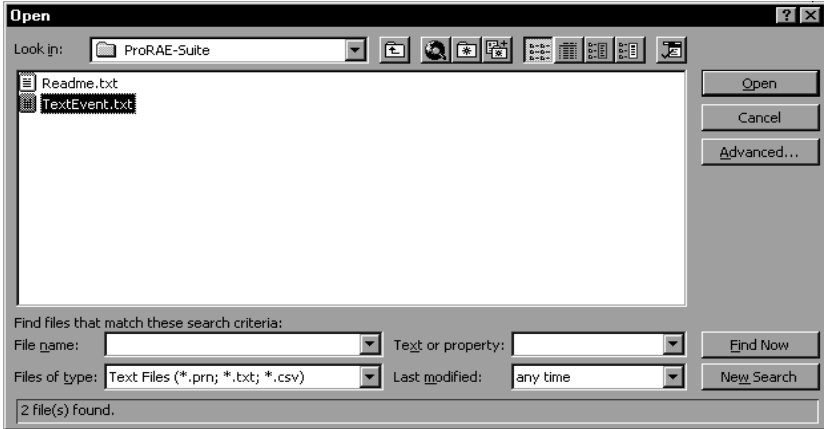


Figure C-2 **Open** Dialog Box

- Click **OK** button, a **Text Import Wizard** dialog box is open, as shown in Figure C-3.



Figure C-3 **Text Import Wizard** Dialog Box

- Click **Finish** button, the dialog box disappears and the event data is loaded into the MS-Excel software, as shown in Figure C-4.

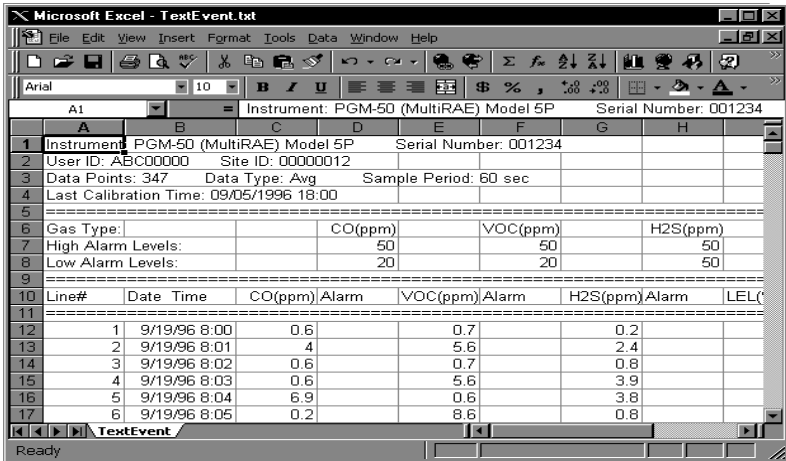


Figure C-4 File Text Event.txt is Open

- Click **File->Save As** menu item to save the loaded event data to a MS-Excel file. Ensure that in the **Save As** dialog box, the **Save as type** is **Microsoft Excel Workbook**.

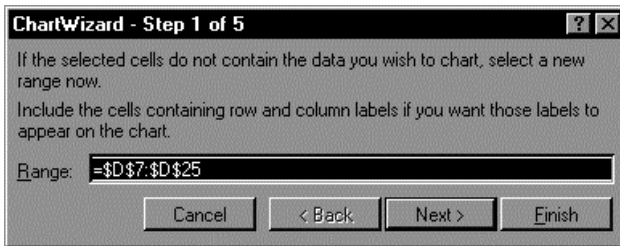
Graphing MultiRAE PLUS Data in Excel®

- Open the Excel® data file that contains the data to be graphed by selecting “File” and then “Open.” Highlight the columns that contain the data points. Make sure that the header information is not highlighted.
- Go to the “Insert” menu, and under “chart” elect “As New Sheet.”

APPENDIX C

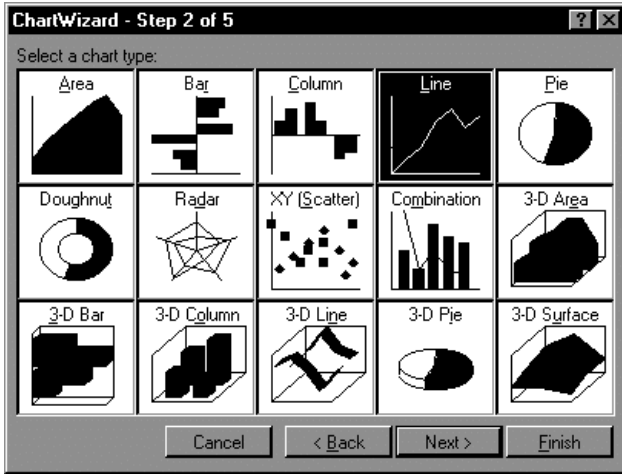
	A	B	C	D	E	F	G	H	I
1	S/N:001	234	User ID:	ABC00000	Period(s	ec): 60	Cal: 9/05 1	8:00	
2	Year:19	96	Site ID:	12	Data Poi	nts: 347	Data Type	Avg	
3	Date	Time	Limit	CO (pp	m)VOC(pp	m)H2S(ppm)	LEL(%)		
4			High	50	50	50	50	-	
5			Low	20	20	20	20	-	
6									
7	19-Sep	8:00		0.6	0.7	0.2	2.2	-	
8		8:01		4	5.6	2.4	2.5	-	
9		8:02		0.6	0.7	0.8	0	-	
10		8:03		0.6	5.6	3.9	5.5	-	
11		8:04		6.9	0.6	3.8	3.9	-	
12		8:05		0.2	8.6	0.8	1.8	-	
13		8:06		2.2	2.4	0	0.5	-	
14		8:07		2.5	8.3	0.7	0.9	-	
15		8:08		0.9	0.9	0.9	0.9	-	
16		8:09		0.9	10.5	0.2	0.7	-	
17		8:10		0.9	0	0.7	1	-	
18		8:11		0.9	15.3	1	0	-	

- The first step of the ChartWizard will appear. In the “Range” area, the cells that were highlighted on the chart will be denoted.



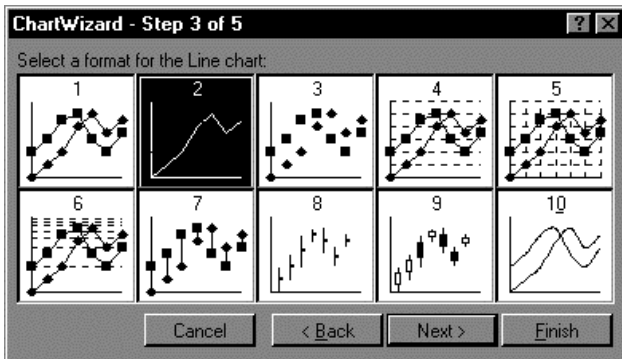
Press the “Next” button to continue.

- The next step will show the different chart types. For this example, the “Line” chart has been selected.



Press the “Next” button to continue.

5. Step 3 of the ChartWizard give additional choices for the line chart, including data markers and gridlines. In this example, number 4 has been selected, so there will be markers and gridlines.

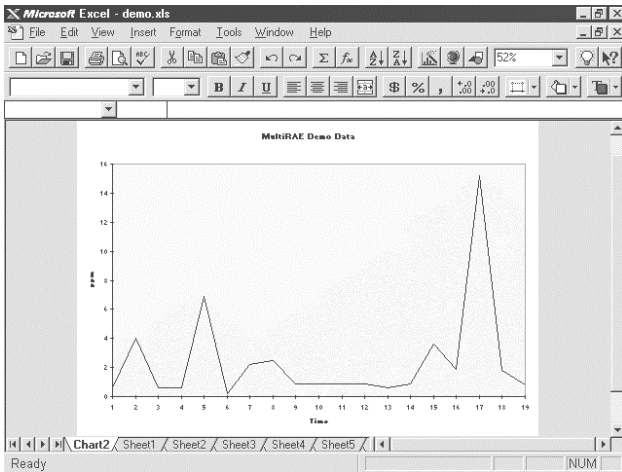


Press the “Next” button to continue.

6. The next step shows a preview of the chart. This will ensure that the correct columns were chosen in the

spreadsheet that comprise the chart. Press the “Next” button to continue.

7. The final step is where the chart title and axis titles may be added. After these are added in the spaces provided, press the “Finish” button.
8. A sample of a finished chart is below. For additional information and other modifications that can be made to the Excel[®] chart, please refer to the Excel[®] instruction manual.



RAE Systems Inc.
1339 Moffett Park Drive
Sunnyvale, California 94089

Main Contact Numbers

TEL: 408.752.0723

FAX: 408.752.0724

Toll Free Numbers

Instrument Sales: 877-RAE.CUSTOMer (723-2878)

Technical Service: 888.RAE.4800 (723.4800)

Tube Sales: 888.RAE.TUBE (723.8823)

E-mail:

Instrument Sales: raesales@raesystems.com

Technical Service: tech@raesystems.com

Tube Sales: raetubes@raesystems.com

**World Wide Web site:
www.raesystems.com**